



**TAIWAN
EXCELLENCE**

THE BEST MADE IN TAIWAN

PRODUCT BROCHURE

Embedded World 2024

April 9-11

Taiwan Excellence Pavilion

Hall 5, 5 - 141



**TAIWAN
EXCELLENCE**

About Taiwan Excellence

Taiwan Excellence is a prestigious award from Taiwan, bestowed only upon a select handful of brands that represent the best made in Taiwan.

Each year, a cross-disciplinary team of jurors identify and select Taiwanese brands that are setting new standards in sustainability, design, R&D, quality, and marketing.

Over the years, Taiwan Excellence has evolved into one of the most sought-after and recognizable symbols worldwide. Taiwan is your trusted partner for business cooperation.



EXHIBITORS

ADVANTECH

Enabling an Intelligent Planet

iBASE

AIFA

Lanner

APLEX
Technology

MITAC
MITAC DIGITAL TECHNOLOGY CORP.

ATrack

MODERNSOLID

AVerMedia

NEXCOM

Eink

PLANET
Networking & Communication

EverFocus
Your Safety, Our Focus

ZCOM

ADVANTECH

Enabling an Intelligent Planet

Advantech Co., Ltd.

Advantech is a global leader in the Internet of Things (IoT) intelligent systems and embedded platform industries, with the corporate brand vision of "Enabling an Intelligent Planet."

Advantech has implemented the WISE-IoT industrial IoT cloud platform as the foundational IoT software and hardware solution in embrace of the major trends of IoT, big data, and artificial intelligence.

Having partner clients integrate industry chains is the objective of this. Advantech further expedites the achievement of intelligent industry objectives through its active collaboration with numerous industry partners to "co-create" industry ecosystems.

Ken Lin

Product Sales Manager

Email: Kencf.Lin@advantech.nl

Phone: +31-40-267-7019

►► Compact IPC

IPC-320



- Intel® 12th/13th/14th Gen Core i Desktop (LGA1700) CPU with H610E chipset
- Compact 7.7-liter design for in-cabinet installations with limited space
- Exclusive thermal design ensures low noise operation (34dB acoustics)
- 2 low profile expansion slots (PCIe x16 and PCIe x4)

[Learn More](#)



TAIWAN
EXCELLENCE

►► Fanless Edge AI Inference System

MIC-770 V3 + MIC-75GF10



- Intel® 12th/13th/14th Gen Core™ i CPU socket-type (LGA1700) with Intel® R680E/H610E chipset
- Fanless system supports NVIDIA MXM GPU (up to 80W)
- 3 x DP and 1x HDMI with 2x removable 2.5" SATA storage bay

[Learn More](#)



►► ePaper Smart Building Solution

EPD-660/662



Advantech's EPD-660/662 Wireless ePaper Solutions provide smart buildings a new vision.

It provides low-power consumption performance and real-time visual information for users. System operation is highly considering the user experience including friendly to human's eye and the interaction between system through the button and indicator.

Learn More



TAIWAN
EXCELLENCE



AIFA Technology Corp.

AIFA's infrared database stores signals of more than 1,000 electronics brands. And we're always pursuing highest quality and innovation goals.

Pursuing very high standards, AIFA works with clients from Japan and Germany for more than 10 years. AIFA's voice controlled smart box sends infrared signals to electronics like TV, lighting, air conditioner. This product is easy to set up, allowing it to take commands via voice. With easy setup process. users can control their devices by voice.

Linda Li

Sales

Email: aifa@aifa.com.tw

Phone: +886-7-777-7128

▶▶ i-Ctrl Pro (AIFA Smart Remote)

i-Ctrl Pro



i-Ctrl Pro turns your home into a smart home. Traditional remote control only functions when you are at home. i-Ctrl Pro solves this: Easy to set up and user-friendly, built-in temperature and humidity sensor, and supports voice control. It enables smart control for all traditional devices with unlimited remote control range from your smartphone to your house using Wi-Fi/4G/5G internet.

[Learn More](#)



▶▶ **i-Ctrl AC** **(AIFA Smart AC Remote)**

i-Ctrl AC



i-Ctrl AC, the central hub of IoT smart home products, allows you to manage your home air conditioner remotely via Wi-Fi/4G/5G internet and Infrared (IR) technology. With a built-in temperature and humidity sensor, and support for voice control via Google Nest, Amazon Alexa and Siri, it provides a complete smart home ecosystem by connecting and turning the legacy home appliances to smart appliances.

Learn More



▶▶ **AVC01** **Smart Voice Control Box**

AVC01



AVC01 AIFA Smart Voice Controller turns your home into a smart home. No need for Wi-Fi/internet connection, the plug and play design enables user to voice control TV, AC, Set Top Box, Fan, Ceiling Light, vacuum easily and conveniently.

[Learn More](#)



TAIWAN
EXCELLENCE



APLEX Technology Inc.

APLEX has devoted all efforts to develop industrial panel PC, HMI, box PC, display, industrial boards and AIOT solutions. We are committed to developing industrial solutions.

APLEX offers various competitive solutions for AIOT, smart manufacturing, smart transportation and smart medical solutions. We pursue excellence by breakthroughs and innovations to fit the customers needs.

Ivan Chen

Marketing Manager

Email: ivanchen@aplex.com

Phone: +886-8226-2881 #2516

►► **PhanTAM-921CP**



21.5" IP66 / IP69K Stainless Steel Panel PC

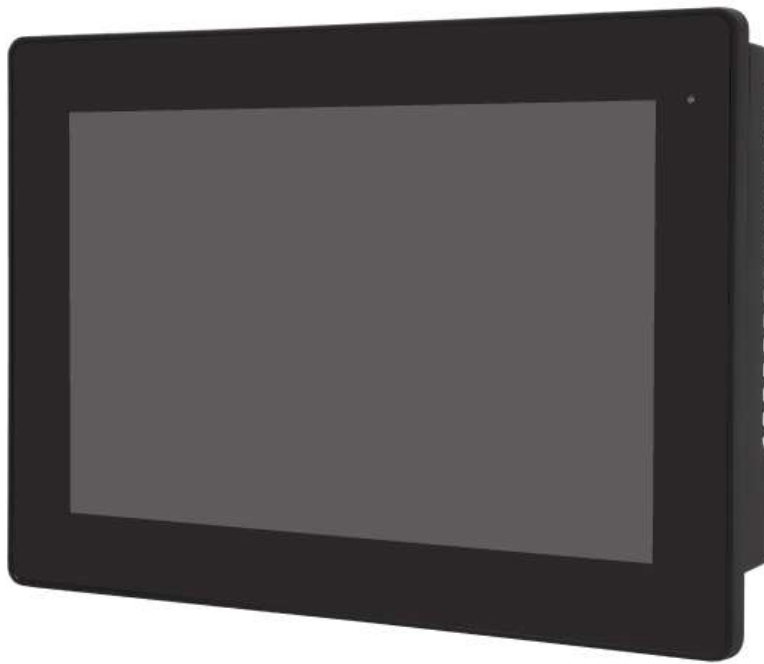
- 11th Gen. Intel Core i3/i5
- SUS304 Stainless Steel Enclosure (SUS316 for option)
- IP66/IP69K Rated with M12 Connectors
- Special Hygienic Bolts
- Waterproof Wireless Antenna Covers
- VESA Mount / Swing Arm / Floor Stand

Learn More



TAIWAN
EXCELLENCE

▶▶ **AUHMI-910CP**



10.1" Fanless Industrial HMI

- 11th Gen. Intel Core i3/i5
- IP66 Front Bezel and Flat Front Panel Touch Screen
- Fanless Design with Aluminum Die-casting Chassis
- Support Expansion I/O boards
- Support Hardware TPM2.0 Security
- Modular Design

Learn More



**TAIWAN
EXCELLENCE**

▶▶ **ABOS-921CP**



21.5" Button-Integrated Industrial Panel PC

- 11th Gen. Intel Core i3/i5
- Flat Front Panel Touch Screen and Functional Buttons
- Full IP65 with Aluminum Anti-Corrosion Enclosure
- Stainless Steel I/O Cover Integrated with Swing Arm Mounting Kit

[Learn More](#)



TAIWAN
EXCELLENCE



ATrack Technology Inc.

ATrack Technology is the world's leading brand of telematics products and services. With more than 20 years of accumulated technology, ATrack Technology is dedicated to providing telematics devices that are certified by global communication network and telecommunication providers, from product design, technology R&D, manufacturing to the global marketing of its own brand.

Jannette Wang

Sales Manager

Email: Jannette.Wang@atrack.com.tw

Phone: +886-2-2797-5852 #248

▶▶ Long Standby Asset Tracker

AS500



The AS500 long standby asset tracker is a reliable and durable device that meets the highest standards for waterproof and dustproof housing design.

[Learn More](#)



TAIWAN
EXCELLENCE

▶▶ **Solar-powered Asset Tracker**

AS700



AS700 solar-powered asset tracker is equipped with LTE-M/NB-IoT or LTE Cat.1 connectivity and features MPPT technology for efficient battery charging. With a remarkable 1-year battery life, it detects motion, tampering and door opening. Ruggedized IP69K/IP68 enclosure, it also offers Bluetooth long-range connectivity for diverse wireless sensors.

[Learn More](#)



TAIWAN
EXCELLENCE

►► Compact Rechargeable Multi-purpose Tracker

AS300



AS300 rechargeable device ensures versatile applications and cost savings. Enjoy extended battery life – 2 weeks at 60-minute intervals or 2 days at 1-minute intervals. Waterproof and durable, ideal for outdoor use. Connect and monitor multiple devices simultaneously with BLE sensors for efficient tracking.

[Learn More](#)



TAIWAN
EXCELLENCE



AVerMedia Technologies, Inc.

AVerMedia empowers people to easily connect and boldly create through innovative audiovisual technology. Our solutions help individuals work productively, forge new relationships, and broaden their horizons in ways that were not possible before. Our product range includes a wide array of powerful yet user-friendly devices such as webcams, video capture cards, and microphones tailored for content creators, educational institutions, and businesses. Additionally, we offer customized embedded solutions to meet industrial demands, ranging from smart retail to smart cities, catering to various AI and IoT applications. At AVerMedia, we are guided by a philosophy of contributing to society—whether through products that enhance customers' lives or by ensuring our operations adhere to social responsibility standards.

Vincent Tsai

Marketing Manager

Email: vincent.tsai@avermedia.com

Phone: +886-2-2226-3630 #6643

►► **Fleet Management AI Box PC**

NO135K



The AVerMedia AI Box PC built with NVIDIA Jetson Nano module is tailored for fleet management and smart security, supporting four AHD 1080p 30 image analyses concurrently. It offers superior stability and inference performance over Intel X86 systems.

[Learn More](#)



TAIWAN
EXCELLENCE

►► Multi-function Standard Carrier Board (Applies to NVIDIA BSP directly)

D131L



AVerMedia's D131L carrier board supports NVIDIA Jetson Orin NX/Orin Nano modules with direct NVIDIA BSP support. With USB/MIPI camera compatibility, it's ideal for AI solutions in smart traffic and smart retail applications.

[Learn More](#)



►► Compact Standard Carrier Board

D133



AVerMedia's D133 carrier board, compatible with NVIDIA Jetson Orin NX/Nano modules, offers compact size and excellent performance, ideal for developing AI solutions. Supporting USB/MIPI cameras, it suits various applications in smart retail and smart city.

[Learn More](#)





E Ink Holdings Inc.

E Ink Holdings Inc. (8069.TWO), based on technology from MIT's Media Lab, provides an ideal display medium for applications spanning eReaders and eNotes, retail, home, hospital, transportation, logistics, and more, enabling customers to put displays in locations previously impossible. E Ink's electrophoretic display products make it the worldwide leader for ePaper. Its low power displays enable customers to reach their sustainability goals, and E Ink has pledged using 100% renewable energy in 2030 and reaching net zero carbon emissions by 2040.

E Ink is a member of the Climate Pledge, has joined the Science Based Targets Initiative (SBTi), and has been listed as one of the Asia-Pacific Climate Leaders by the Financial Times, Nikkei and Statista in 2022. Listed in Taiwan's Taipei Exchange (TPEX) and the Luxembourg market, E Ink Holdings is now the world's largest supplier of ePaper displays.

Jacky Teng

Project Manager

Email: jacky.teng@eink.com

Phone: +886-3-564-3200 #12188

►► E Ink Spectra™ 6

28.5"



This full color ePaper technology showcases highly saturated and vivid colors not previously seen in a reflective display, with a visual performance similar to high quality prints, while still maintaining E Ink's low power signature.

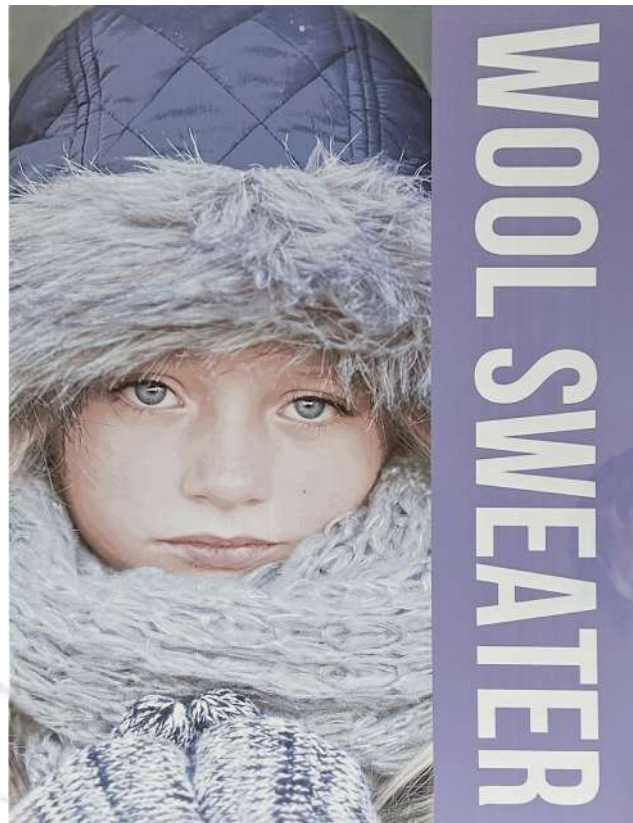
- Four particles system- white, red, yellow and blue to generate full color
- Replace traditional poster, paper. Contents are managed digitally.

[Learn More](#)



►► **E Ink Kaleido™ 3 Outdoor**

25.3"



E Ink Kaleido 3 Outdoor is designed specifically for outdoor use, applications such as Digital Out-of-Home (DOOH) advertising signage, street furniture, bus stops and more.

- Wide temperature range: -15°C to 65°C
- It can operate in extremely cold or hot areas without the need for expensive, high-energy-consuming heating or cooling devices, reducing additional power consumption.

[Learn More](#)





EverFocus Electronics Corp.

"EverFocus is a world-class leader in smart security and smart transportation solutions. Mainly produce industrial computers, CCTV and Mobile DVR. We provide a variety of customized smart solutions to help our customers and partners guard their working environment, such as: smart transportation, smart buildings, and smart security."

Irene Yang

Sales Manager

Email: irene_yang@everfocus.com.tw

Phone: +886-2-2662-2388 #3385



►► Outdoor AMR

SFB-200



- Base on High speed VHDL to process the time synchronization
- Output 7-Channels PPS and ToD signal
- Integrated u-blox high precision GNSS module
- Xsens Mti-670 9-axis IMU with fusion engine
- Syncbotic python setting, monitor and demo script
- 16hrs time keeping feature when power down

Learn More



►► **Vehicle AMR**

EAV-30N



- Base on NVIDIA® Jetson Orin SOM module
- Provide M.2 M key 2280 slot with PCIe Gen3 x 4 signal
- M12 X-coded Gigabit Ethernet port
- CAN FD interface with isolation feature
- Provide 7-channel Time sync output for external sensor
- GMSL2 camera FAKRA Z code interface with frame sync
- HMTD Base-T1 Ethernet port for solid states 3D LiDAR x 4/8, Radar, and camera

[Learn More](#)



TAIWAN
EXCELLENCE

▶▶ AI Edge Computer

EAC-50N Series



- Powered by NVIDIA® Jetson Orin™ NX
- Onboard 16GB / 8GB 128-bit LPDDR5
- Multiple I/O interface connections for data collection Gigabit LAN with PD/PSE, USB 3.1, Serial Port, CAN-FD

[Learn More](#)





IBASE Technology Inc.

IBASE specializes in the design and manufacture of robust industrial PC products, delivering high-quality products and excellent service since its establishment in 2000. We carry out manufacturing and quality control at our own facilities in Taiwan that are ISO 9001, ISO 13485, and ISO 14001 certified.

Current product offerings comprise x86- and RISC-based industrial motherboards, embedded systems, panel PCs, digital signage players, and network appliances for applications in the AIoT, automation, smart retail, transportation, networking, and medical sectors. We also provide ODM/JDM services, tailoring products to customers' requirements.

Kerwin Chang

Senior Director

Email: kerwin@ibase.com.tw

Phone: +886-2-2655-7588 #8639

▶▶ Edge AI Computer

SI-624-AI



- iSMART intelligent energy-saving & Observer remote monitoring technologies
- 13th/12th Gen Intel® Core™ i7/i5/i3 / Pentium® / Celeron® QC/DC processors
- NVIDIA Ampere Architecture MXM GPU cards (Type A/B, up to 115W)
- 1x HDMI 1.4 for console, 4x DisplayPort
- Supports OOB function via I210 LAN port (option)

[Learn More](#)



►► Ultra-Compact IoT Gateway Edge Computer

AGS101TS



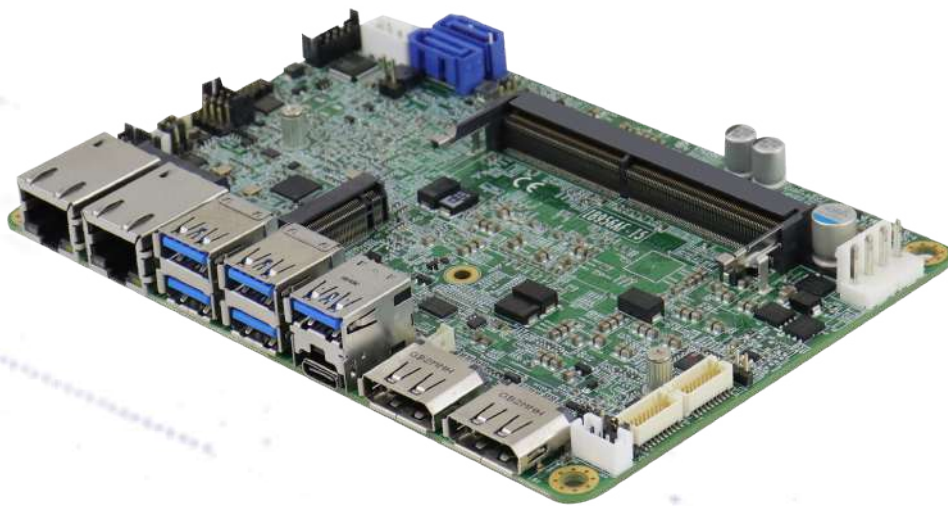
- Intel® Atom® x6212RE/ x6414RE Processors
- Over/Under/Reverse voltage protection
- Extended operating temperature from -20°C to 70°C
- 9V~36V DC wide-range power input
- 1x M.2 B-Key 3052 supports 5G module
- 3x 2.5G Ethernet ports
- Supports DIN-rail mount, wall mount & TPM2.0

[Learn More](#)



►► Industrial-grade 3.5" Single Board Computer

IB956



- Onboard 11th Gen Intel® Core™ / Celeron® processor (formerly Tiger Lake H)
- 1x DDR4 SO-DIMM, Max. 32GB
- Supports 3x DisplayPort (DP connectors + Type-C connector) and 24-bit Dual channel LVDS
- 2x Intel® 2.5 Gigabit LAN
- 6x USB3.1, 2x USB2.0, 2x SATA III, 2x COM, 2x M.2

Learn More



TAIWAN
EXCELLENCE

A decorative background graphic of a circuit board, rendered in a light blue, semi-transparent style. It features various electronic components like capacitors, resistors, and integrated circuits, along with a network of connecting lines. The graphic is positioned diagonally across the page, starting from the top left and extending towards the bottom right.

Lanner

Lanner Electronics Inc.

Lanner Electronics Inc is a world-leading provider of design, engineering, and manufacturing services for advanced network appliances and rugged edge computing platforms for system integrators, service providers, and application developers.

Alex Tkachev

Business Development Manager

Email: alexander_tkachev@lannerinc.com

Phone: +31-616-04-1017

►► Portable Multi-band 5G Router for Mobile Healthcare

NCA-1040



The NCA-1040, a fanless multi-service gateway with Intel® Atom X6413E CPUs, addresses the growing need for Edge security and CPE due to the widespread use of mobile devices and their diverse applications.

[Learn More](#)



TAIWAN
EXCELLENCE

►► Industrial Edge AI Appliance

EAI-I731



Lanner's EAI-I731 is designed to bring advanced AI functionality to harsh environments, optimizing video analytics in retail, traffic management, and factory visual inspections. Designed for real-time processing and durability, it's tested for resilience against harsh conditions, extending edge computing's capabilities to the most challenging settings.

Learn More



►► Edge AI Appliance

EAI-I500



Lanner's EAI-I500, powered by the Intel® Core™ Ultra CPU, is designed to enhance retail video analytics, traffic analytics, and visual inspection in factories. The EAI-I500 stands out in low-latency, real-time AI tasks, with its high-performance GPU and ample storage boosting multitasking and data management.

Learn More



TAIWAN
EXCELLENCE



MiTAC Digital Technology Corporation

As a Trusted leader in automotive electronics, MiTAC Digital Technology helps users navigate life with passion, postivity and a drive to keep moving forward. Beyond automotive electronics, MiTAC is at the forefront of innovation in the fields of AIoT and industrial tablets. We take our customer in new and exciting directions with thoughtful design that reflect highest principles of quality and ingenuity.

MDT Sales Team

Email: Tablet_Sales_EU@mic.com.tw

Phone: +886-3-3962-888

►► Smart Self-Service Kiosk

MioSERV™ S270



- 27" full HD large interactive display with a stylish look
- Dual Operating Systems: Android & Windows
- Built-in QR/Barcode Scanner, Printer, NFC, MSR
- Modular payment options to meet diverse needs
- Optional add-on functions: camera, LED light bar
- User-friendly drawer design for easy maintenance
- Wall mounting/countertop/floor stand
- Scalable solution for QSR, retail, hospitality

Learn More



**TAIWAN
EXCELLENCE**

►► **Fleet Tablet**

MioWORK™ F840



- 8-inch capacitive touch panel with anti-glare coating
- Android™ 13.0 (GMS)
- 8-core Qualcomm processor, on-device AI intelligence
- IP54 water & dust proof, up to 1.8m drop & 20G shock resistant
- Serviceable battery with advanced power management
- Five types of dedicated vehicle cradles
- Built-in 4G LTE, Wi-Fi, NFC, Bluetooth, GPS
- Remote management through MiDM (MiTAC MDM)

Learn More



**TAIWAN
EXCELLENCE**

►► Industrial Tablet

MioWORK™ L1000



- 10 " (1280*800) IPS, 600nits
- 4G LTE Cat.6 Dual-band WIFI connectivity (IEEE 802.11 a/b/g/n/ac)
- Android™ 9.0 (GMS)
- NFC , HF RFID user authentication
- 1.5m drop resistant follow MIL-STD-810G
- Qualcomm® Octa core, 1.8GHz
- IP67-sealed housing and disinfectable
- Professional integrated 1D/2D barcode scanner

[Learn More](#)



TAIWAN
EXCELLENCE



Modernsolid Industrial Co., Ltd.

Modernsolid designs and manufactures ergonomic products for workspace, healthcare, industrial, education, and public spaces. To produce durable products, sustainability is the first element to consider. We try to reduce our impact on the environment during the production process. 95% of our products can be recycled and part of the products are made from recycling material.

Grace Chen

Sales Manager

Email: sales2@mosolid.com.tw

Phone: +886-4-2639-7717

►► Ares Monitor Arm

GA1220



Designed with ergonomics, Ares Monitor Arm is a monitor arm with great functionality. It takes only one finger to effortlessly adjust the display to the perfect viewing position, and it never sinks.

Backed by in-house “Static equilibrium” technology, the monitor arm supports the weight of displays of various screen sizes with user-friendly full range motion.

Learn More



TAIWAN
EXCELLENCE



NEXCOM International

NEXCOM is a global leader in edge computing and industrial IoT solutions, providing integrated services encompassing software-defined edge computing and cutting-edge MOM (manufacturing operations management) platforms. Its comprehensive solutions include network and communication, mobile computing, video surveillance, smart city and retail, digital healthcare, AIoT services, OT cybersecurity, industrial IoT and robots—all developed based on open standards.

Eric Lo

Assistant Vice President

Email: contact@nexcom.com.tw

Phone: +886-2-8226-7786

▶▶ 8" IP65 Rugged Vehicle Mount Computer

VMC 2020



- 8" HD IPS TFT LCD with projected capacitive touch
- Brightness: 1000 cd/m²/ Contrast ratio: 1000:1
- Intel Atom® x7-E3950, 4 Core, 2.0GHz
- IP65 and IK08-rated rugged design
- High resolution 1280 x 720 with wide viewing angle
- Wide range power input 9V ~ 60VDC
- CE, FCC, UKCA, E mark certified

Learn More



►► Visual Edge Computer

NDiS B561S



- 12th Gen Intel® Core™ i3/i5/i7 socket Processor, 35W max.
- 2x DDR5 SO-DIMM, 64GB max, 2x M.2 2280 Key M
- 2x HDMI with 4K@60Hz, 6x USB, 4x COM ports
- 1x Intel® I226V 2.5G LAN ports and 1x Intel GbE LAN

[Learn More](#)



TAIWAN
EXCELLENCE

▶▶ Expandable Compact AI Computing Unit

TT300-A0Q



- Support 12th /13th Gen. Intel® Core™ i7/i5/i3 Processor
- Latest DDR5-4800MHz support
- Support 5G connectivity
- High-speed NVMe with PCIe x4 SSD support
- Provide a variety of expansion interface options

[Learn More](#)



TAIWAN
EXCELLENCE



PLANET Technology Corporation

As a leading global provider of IP-based networking solutions, PLANET has been focusing on the sustainable innovations of the transmission-based network technologies and devices since its establishment in 1993. The company's wide range of high-quality network solutions are exported to the global ICT market under its own brand name "PLANET" through its worldwide distribution channels in more than 160 countries.

Judy Yang

Region Manager

Email: judy@planet.com.tw

Phone: +886-2-2219-9518 #205

▶▶ Industrial LoRaWAN Wireless Gateway with 5-Port 10/100/1000T

LCG-300W



- 8 Programmable Parallel Demodulation Paths
- Frequency Band EU868/US915/AS923 MHz Sub 1G
- Web UI Configuration
- Dual-band in 2.4GHz and 5GHz
- SSL VPN and Robust Hybrid VPN
- DC 9 to 54V Redundant Power
- IP30 and -40~75 degrees C Operating Temperature

[Learn More](#)



▶▶ Industrial 5G NR Compact Cellular Wireless Gateway with 2-Port 10/100/1000T

ICG-2210W-NR



- 5G NR (NSA/SA)/4G LTE with Dual Micro-SIM for Redundancy
- Multi VPN with IPsec, OpenVPN, PPTP, L2TP, GRE
- Full Security with Cybersecurity, VLAN, NAT, DMZ, and IP/MAC/Port Filtering
- SPI Firewall and Content Filtering
- IP30 and -40~75 degrees C Operating Temperature

Learn More



▶▶ Industrial IP30 LoRa Node Controller

LN1130



- Long Data Transmission Distance up to 10km
- Easy Connectivity with Multiple Wired Sensors through RS232/RS485
- Compliant with Standard LoRaWAN Gateways and Network Servers
- 9 to 48V DC with Reverse Polarity Protection
- IP30 and -40~75 degrees C Operating Temperature

Learn More





Z-COM, Inc.

In 2019, ZCOM embraced its own brand, leveraging over 20 years of wireless R&D. With a focus on 5G and WiFi6, we offer cutting-edge solutions globally. Committed to premium customer service, we adapt to industry trends, expand alliances, and provide localized services for a competitive edge.

Catherine Wu

CEO

Email: sales@zcom.com.tw

Phone: +886-3-577-7364

►► Outdoor Wireless Access Point

SP230-S5



- Outdoor wireless access point for PtP
- Long distance transmission up to 6KM
- managed remotely with self-detection & self-healing
- IP67/ 14-level wind resistant/salt-spray test passed
- Umbrella shaped prevents water leakage
- Bevel design 23.7° avoid puddle and bird standing

[Learn More](#)



TAIWAN
EXCELLENCE

►► 5G Industrial Gateway for Rail applications

AG260



- Wi-Fi 6+ 5G NR Industrial Gateway
- EN50121/ EN50155
- Dual SIM slots
- SFP socket
- M12 X-Coded
- GPS
- Dual WAN Failover/ Failback
- VPN Pass-through
- Built-in NAT Firewall

[Learn More](#)



**TAIWAN
EXCELLENCE**

►► **Wi-Fi 7 access point main board+Wi-Fi card**



- Wi-Fi7: Qualcomm Quad-core 1.5GHz, 1GB DDR4 RAM, 8GB eMMC, 128MB SPI-NAND.
- IPQ5332 & QCN9274, 2.4/5/6GHz, 10Gbps.
- For Telecom, enterprise, outdoor, industrial applications.
- MIT quality assured.

Learn More



**TAIWAN
EXCELLENCE**



TAIWAN EXCELLENCE

Organized by



International Trade Administration



Taiwan External Trade Development Council