



**TAIWAN  
EXCELLENCE**

---

# PRODUCT BROCHURE

---

Infocomm2026 | North Hall-N7763



The Best  
Made in  
TAIWAN

**TAIWAN**  
**AI ISLAND**



## About Taiwan Excellence

Taiwan Excellence is a prestigious award from Taiwan, bestowed only upon a select handful of brands that represent the best made in Taiwan, recognized for their innovation and achievements.

Organized by the Taiwan Administration of Trade (TITA), this award underscores the government's commitment to promoting outstanding Taiwanese industries on the global stage.

Each year, a cross-disciplinary team of jurors embarks on a mission to identify and select Taiwanese brands that are setting new standards in sustainability, design, R&D, quality, and marketing.

Over the years, Taiwan Excellence has evolved into one of the most sought-after and recognizable symbols worldwide, further solidifying Taiwan's reputation as a trusted global partner.



# EXHIBITORS

**AIFA**

————— 3

**GOOD WAY**

————— 25

**ARBOR**

————— 7

**iBASE**

————— 28

**AVer**

————— 11

**INNOLux**

————— 32

**CYP**

————— 15

**INWin™**

————— 38

**datavideo**

————— 19

**IPEVO**

————— 42

**GIO**  
OPTOELECTRONICS

————— 22



## **AIFA Technology Corp.**

AIFA Technology is a key enabler of both universal remote controls (IR) and the Internet of Things (IoT), using world-leading technologies and standards, including Bluetooth and Wi-Fi. With 29 years of design, development, and manufacturing experience, we have been providing services to many major electronics brands in Japan, Germany, and around the world.

### **Linda Li**

Email: [aifa@aifa.com.tw](mailto:aifa@aifa.com.tw)

Phone: +886-7-7777128

## ▶▶ **i-Ctrl Pro (AIFA Smart WiFi Smart Remote Control Box)**

i-Ctrl Pro



i-Ctrl Pro turns your home into a smart home. Traditional remote controls only function when you are at home, but i-Ctrl Pro solves this. Easy to set up and user-friendly, it enables smart control of all traditional devices with unlimited remote control range from your smartphone to your home using 3G/4G internet. It features built-in scheduling, scenes, and GPS sensing functions. The upgraded version of i-Ctrl Pro also has built-in temperature and humidity sensors to unleash more possibilities and user scenarios for users.

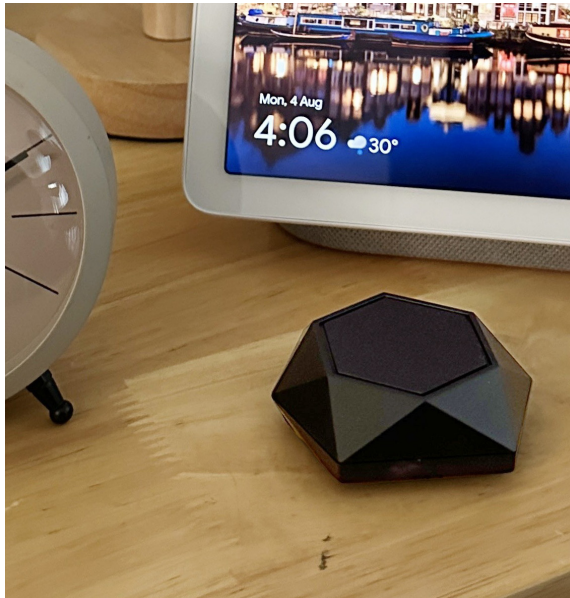
You can also use voice control through Google Home, Amazon Alexa or Siri to voice control home devices with i-Ctrl Pro. i-Ctrl Pro is on a mission to make traditional home appliances smart.

[Learn More](#)



## ▶▶ **i-Ctrl AC Plus (AIFA Smart AC Plus remote)**

i-Ctrl AC Plus



i-Ctrl AC Plus turns your home air conditioner smart and controls via your smartphone app or tablet. i-Ctrl AC Plus serves as a central hub for IoT smart home products, allowing you to manage and control your home AC remotely via Wi-Fi/4G internet and infrared (IR) technology. It provides a complete smart AC control experience by turning traditional AC into smart appliances.

i-Ctrl AC Plus supports both iOS and Android systems, as well as smart assistants such as Google Assistant, Siri Shortcuts, and Amazon Alexa, to enable voice control. Thus, i-Ctrl AC Plus helps you upgrade your home AC to a smart AC and enjoy a smart home through the AIFA Smart app and voice control. It is easy and convenient.

[Learn More](#)

## ▶▶ AIFA Smart Voice Control box

AVC01



AVC01 AIFA Smart Voice Controller turns your home into a smart home and can voice control your traditional home appliances in seconds. No Wi-Fi/internet connection is needed. The plug and play design enables users to control TVs, ACs, set-top boxes, fans, ceiling lights, and vacuums easily and conveniently. It is also equipped with a learning function, suitable for homes, schools, offices, factories, and many other places to upgrade and enjoy smart voice control.

[Learn More](#)



## **ARBOR Technology Corporation**

ARBOR is a global provider of dedicated industrial IoT computing and mobility solutions. ARBOR offers comprehensive system integration, customer-centric design services, embedded systems, automation products, and global logistics support. We cooperate closely with our partners to develop complete solutions for a wide array of applications across a diverse range of industries. Our mission is to enable an intelligent planet by providing mobility and embedded computing products that make working and living smarter. With ARBOR, there is no limit to how smart your business can be.

### **Charles Cha**

Email: [charlesc@arborsolution.com](mailto:charlesc@arborsolution.com)

Phone: +1 (408) 452-8900#116

## ▶ IEC-3714 Digital Signage Box PC IEC-3714



- Intel® Core™ Ultra processors (Meteor Lake-H/U) with Intel® Arc™ Graphics
- 2 x DDR5 SODIMM up to 96GB
- 1 x M.2 M-Key (PCIe 4.0 x4) 2242/2280
- 1 x M.2 M-Key (PCIe 4.0 x4) 2242
- 1 x M.2 E-Key (PCIe x1) 2230
- 2 x HDMI 2.1 TMDS, 1 x DP 2.1/ 1 x DP1.4a (from Type-C)
- 1 x 2.5 GbE RJ45
- Operating temperature: 0~50°C

[Learn More](#)

## ▶▶ IEC-3904 Digital Signage Box PC

IEC-3904

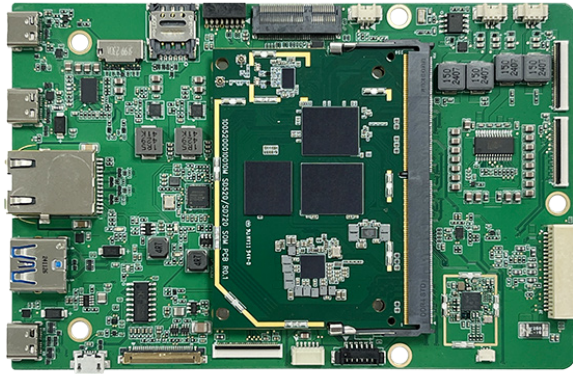


- Intel® 11th Generation Core i7/i5/i3/ Celeron processor
- Support 2 x HDMI with independent video outputs
- Support 1 x COM, 4 x USB 3.0, 1 x GbE port
- Support Intel® vPro & AMT
- Extended operating temperature: -20 ~ 70°C

Learn More 

## ▶ **SBC-MB721 MediaTek Genio 720 Embedded System SBC Module**

SBC-MB721



- MediaTek Genio 720 with 2x CA78 & 6x CA55 cores
- NPU850 with AI Processing 9.0TOPs
- 8GB LPDDR5 and 64GB UFS3.1
- Built-in Wi-Fi6E and BT5.3, Gbit Ethernet
- Support Android 15 & Yocto

Learn More 



## **AVer Information Inc.**

Founded in 2008, AVer Information Inc. focuses on the innovation of AI audio-video technology in the Pro AV, Education, Telemedicine, and Video Conferencing fields. The company provides solutions such as AI auto tracking and professional PTZ cameras, document cameras (visualizers), charge & sync carts, classroom audio systems, medical grade cameras, and video conferencing solutions – many of which have received prestigious domestic and international awards. In addition to offering customers an intuitive and interactive collaboration experience, AVer upholds an environmentally friendly philosophy, actively fulfilling its corporate value of sustainable development. Learn more at <https://www.aver.com>.

### **Alice Stevens**

Email: [alice.stevens@aver.com](mailto:alice.stevens@aver.com)

Phone: (408) 821-1304

## ▶▶ TR615 Broadcast Professional Auto Tracking PTZ Camera

TR615



The AVer TR615 is a 4K AI auto tracking PTZ camera designed to meet the needs of professional AV environments including live event production, house of worship streaming, corporate communications, higher education, and government broadcasting. Powered by AI auto tracking technology and a responsive PTZ motor, the TR615 enables accurate, hands-free subject tracking. It features a 1-inch Sony Exmor RS<sup>®</sup> CMOS sensor, 19X optical zoom, advanced image processing to deliver clear, high-quality video across various room sizes and lighting conditions. With dual 12G-SDI, Genlock, NDI<sup>®</sup> HX3, Dante AV-H\*, Free-D support, the TR615 offers flexible integration with modern AV systems and production workflows.

[Learn More](#)



## ▶▶ VB150 4K Video Bar

VB150



The AVer VB150 4K Video Bar is an all-in-one video conferencing camera for huddle and small meeting rooms. It features 4K resolution, AI Voice Tracking that follows active speakers, and Smart Composition that automatically frames all participants. Its plug-and-play BYOD connectivity enables effortless content sharing. An optional microphone can extend audio coverage while flexible mounting options adapt to any workspace. Sleek, modern design transforms meetings into flawless, professional hybrid collaboration experiences.

[Learn More](#)



## ▶▶ MD331UI Medical Grade PTZ Camera

MD331UI



Designed specifically for in-hospital remote nursing, the AVer MD331UI, with its superior acoustic performance, bridges the gap between in-person and virtual consultations through dual-mode sound pickup. In addition to medical grade EMC stability, the MD331UI incorporates various specifications specifically for hospital settings, addressing the shortcomings of general consumer products. Building on the success of its predecessors, the MD331UI redefines the remote healthcare experience with next-generation audio precision.

[Learn More](#)



## **Cypress Technology Co., Ltd.**

At CYP, we believe technology should connect people, not complicate their work.

We create seamless audiovisual experiences that support collaboration, decision-making, and the moments that truly matter, helping teams communicate clearly and operate confidently.

We also care about sustainability, applying it through energy-saving designs, eco-friendly packaging, and reduced electronic waste. Our mission is simple: make professional AV solutions easy to trust, intuitive to use, and meaningful in everyday life.

### **Karen Chen**

Email: [karen.chen@cypress.com.tw](mailto:karen.chen@cypress.com.tw)

Phone: +886-2-22269586

## ▶▶ 4K60 Video Control Center Solution

### AVIP-A4601E/D-BIC + CDPS-CS11



Video is a key information source in smart manufacturing, emergency response center and traffic control centers, etc. This 4K60 video control center solution uses AV over IP to transmit 4K60 video via standard category cables with 1G bandwidth, reducing setup costs.

It supports centralized and remote management, integrates cloud conferencing to reduce on-site equipment needs and allows unlimited-distance, cross-floor transmission via network switches. Multi-source video can be displayed on video walls while KVM over IP enables intuitive multi-screen operation with a single mouse and monitor and flexible screen push to meeting rooms or offices. Officers can get the video through get function to enhance collaboration for quick decision making.

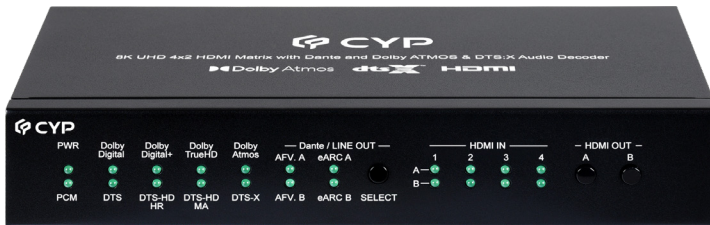
The system supports scalable sources and displays, integrates Dante audio with amplifiers for video broadcasting in control center, and features a fully customizable architecture. Already adopted in various government and enterprise projects.

[Learn More](#)



## ▶ 8K 4x2 HDMI Matrix with Dante and Dolby ATMOS & DTS X Audio Decoder

### VMX-H8K-4260



This 8K 4x2 HDMI Matrix integrates Dante® technology, and Dolby ATMOS & DTS X audio decoder, simplifying system integration for commercial AV environments. Thanks to the integrated support for Dante/AES67 technology which extends and routes audio across standard Ethernet networks, this unit forms an important part of an easier and more flexible system for managing large audio systems than traditional point-to-point physical wiring. Dante does away with the bundles of heavy, expensive, multi-core analog audio cables and replaces it with low cost, and easy to manage, Cat.5e/6/7 cables while maintaining the high quality expected from uncompressed digital audio.

Due to the nature of packet-based Ethernet data transmission, there is no need to worry about the traditional enemies of long distance audio extension, such as analog signal interference, crosstalk, or signal attenuation. All of this is provided with the absolute minimum of latency (typically around 1ms). This product also allows users to route up to four 40Gbps HDMI input signals to Output A and 18Gbps to Output B. Dante digital audio output enables audio transport of up to 16 channel audio signals over a network using standard Internet protocols. Ethernet enables remote control via Telnet and WebGUI, while a durable front panel with buttons provides full local control. The DSP processing technology are with new adaptive feedback and noise cancellation functions.

## ▶▶ 4K60 8 x 9 HDMI Seamless Matrix CPLUS-89SM



This unit supports 8 different HDMI input signal resolution, up to 4K60 4:4:4. It allows sources individually routing to 9 HDMI outputs as Matrix mode. It also offers TV Wall and Multiview window layout mode, providing greater flexibility for various usage scenarios. Route presets can be easily configured and stored for quick recall. Standard control is available via front panel controls with LCD menu, information OSD, remote control, RS-232, Telnet, and WebGUI, making it exceptionally versatile. Audio format supports up to 7.1CH LPCM LPCM, Bitstream, and HD Bitstream bypass at 192kHz sampling rate. Custom logo uploads are available for free-run and standby modes. This unit is designed to enrich professional video and audio management, offering versatile configuration options and expanded functionality within a single device.



## **Datavideo Technologies Co., Ltd.**

Datavideo is a global manufacturer of live video equipment for the broadcast and professional AV markets. What sets Datavideo apart from other video equipment manufacturer is that we specialize in end to end video production solutions for various vertical markets ranging from broadcast to worship to education as well as corporate and social media.

You will see in this product guide a wide range of products we offer for your live video production needs. Whether you are a novice video producer, who is learning live video production, or who's starting to learn about live production or a seasoned video professional, we have something you need in our product line.

We pride ourselves in making products that are high quality, but easy to use. It's a family of products that are designed to work together so that you never have to worry about the compatibility of your products. Our customers purchase our equipment with confidence in knowing that they are a solution to their video production.

### **David Sung**

Email: [davidsung@datavideo.com.tw](mailto:davidsung@datavideo.com.tw)

Phone: +886-2-8227-2888 #474

## ▶▶ 4K Dual Channel Presentation Switcher

iCAST mini



From small scale corporate training sessions to mid-sized hybrid classrooms or conference halls, the iCAST mini is the perfect fit for your online presentation needs. With the one-button-one-function feature on a unique and easy to use touch panel control, even novice users will be able to operate this device.

[Learn More](#)

## ▶▶ 12x Dual Lens Voice Tracking PTZ Camera

VTC-100



The VTC-100 is an AI-powered voice tracking camera with a dual-lens design—combining a wide panoramic view and a close-up PTZ lens. It automatically detects and frames the active speaker in real-time, delivering smooth, professional video without manual control. Ideal for hybrid meetings, classrooms, and live presentations.

[Learn More](#)



## **GIO Optoelectronics Corp.**

Founded in 2004, GIO has been a member of the Innolux Group and a dedicated supplier of key components to the display panel industry. With years of accumulated experience in panel development and manufacturing, GIO is backed by a technically advanced engineering and R&D team. Our strong capabilities in innovation and process optimization give us a competitive advantage in the integration and application of next-generation display technologies. This foundation gives us a competitive edge in the integration and application of next-generation display technologies.

### **Huang-Yu Tai**

Email: [vivitai@giotaiwan.com.tw](mailto:vivitai@giotaiwan.com.tw)

Phone: +886-6-5889999 #25002

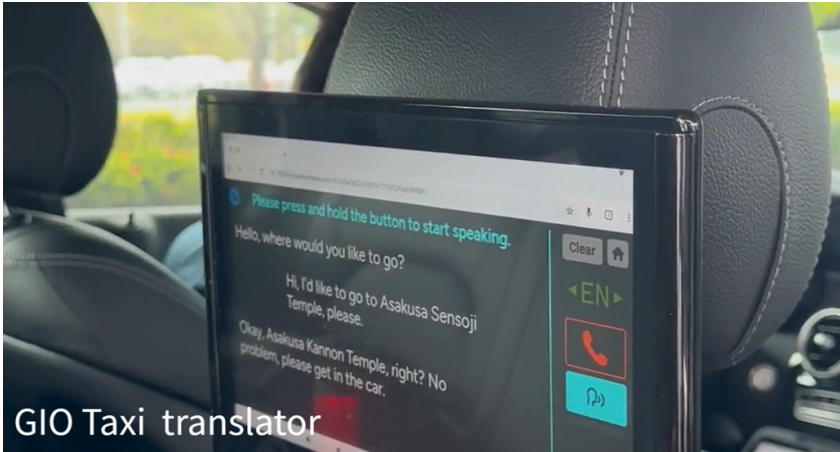
## ▶ Anytime Talk Translator VT168X



GIO Anytime Talk Translator provides real-time multilingual translation to enhance communication efficiency. It supports remote instant translation for unmanned counters and self-service scenarios. AI-powered prompts generate key information instantly, while QR code scanning lets users carry essential information on the go, anytime, anywhere.

## ▶▶ Taxi Translator

VT178X



The GIO taxi translator is a revolutionary communication solution designed for the global smart mobility market. It features an AI-powered real-time translator that eliminates language barriers between drivers and international tourists, supporting over 21 languages with high-speed voice recognition. Utilizing transparent display technology, it ensures a natural, face-to-face service experience without compromising safety or visibility.

[Learn More](#)



## **Good Way Technology Co., LTD**

Founded in 1983 and listed on the Taiwan Stock Exchange in August 2014 (Ticker: 3272), Good Way Technology is a global leader in computer peripherals and wireless consumer product design and manufacturing.

With over 40 years of solid experience and technical expertise, Good Way has expanded beyond traditional peripherals into AI-driven applications and SIoT (Smart IoT) home security and care solutions, forming three strategic pillars that define our group's future growth. Leveraging comprehensive capabilities in design, R&D, manufacturing, and supply chain integration, we are the trusted partner of leading global brands across multiple industries.

### **Irene Cheng**

Email: [irene\\_cheng@goodway.com.tw](mailto:irene_cheng@goodway.com.tw)

Phone: +886-2-8919-1200 #6611

## ▶ ArgusPTZ-Intelligent PTZ Camera Group Control System

### ArgusPTZ



ArgusPTZ is an AI-powered PTZ control software that upgrades existing PTZ cameras into intelligent, task-aware systems. Rather than replacing hardware, ArgusPTZ adds a software intelligence layer that enables more natural camera behavior, scenario-based control, and centralized management. Designed for both video conferencing and security monitoring, it helps organizations improve visibility, operational efficiency, and return on investment, making PTZ cameras smarter, easier to manage, and more valuable across professional environments.

Learn More



## ▶ Smart Dock & DockNavi Intelligent Docking Solution

DUD8380 / DUD8390 / DBD8400



Good Way Cloud Management System is designed to manage docking stations for an entire company or organization, offering the flexibility to operate as either a public cloud or an on-premises server. This system provides IT managers with comprehensive tools to efficiently handle dock management tasks, including firmware updates, remote access control for USB peripherals and monitors.

With a rich set of features, the system allows IT managers to effortlessly implement access controls and even schedule automatic shutdowns of equipment after work hours to promote energy savings. The system's user-friendly web management interface provides a detailed, visual approach to managing all aspects of the docking stations, ensuring smooth and efficient operations.

One of the standout features of this system is that it requires no additional software installation on individual computers. Even in situations where no computers are connected, the docking stations can seamlessly connect to the server and perform all necessary functions, making it an incredibly versatile and powerful tool for any IT management team.

[Learn More](#)



## **IBASE Technology Inc.**

IBASE Technology (TPEX: 8050) specializes in the design and manufacture of robust industrial PC products, delivering high-quality products and excellent service since its establishment in 2000. We carry out manufacturing and quality control at our own facilities in Taiwan that are ISO 9001, ISO 13485, and ISO 14001 certified. IBASE supplies a comprehensive range of digital signage media player products designed for single and multiple large displays that are ideal for a variety of applications and venues such as restaurants, retail stores, banks, airports and shopping malls to convey dynamic information and targeted promotions. We offer the highest quality entry, mid-range to extreme performance FHD/4K/8K digital signage players to enhance the customer experience. For more information, please visit [www.ibase.com.tw](http://www.ibase.com.tw).

### **Alice Chen**

Email: [alice@ibase.com.tw](mailto:alice@ibase.com.tw)

Phone: +886-2-26557588

## ▶▶ Ultra Slim Remote Control Digital Signage Player

SI-212-N



- iSMART smart control energy-saving and Observer Connect remote monitoring & management technologies
- Intel® Atom® x7000E & x7000RE Series / N-series / Core™ i3-N305 processors (formerly Amston Lake / Alder Lake-N)
- 1x DDR5-5600 SO-DIMM, Max. 16GB (Max data rate DDR5-4800)
- 2x HDMI 2.0 with independent audio output
- Built-in CEC and hardware EDID emulation functions with software setting mode
- Supports PDPC (Peripheral Device Power Control) function
- Supports OOB function via I2101T LAN port (optional)
- 1x M.2 E-Key (2230) for WiFi, Bluetooth options
- 1x M.2 M-Key (2280) for storage
- TPM 2.0 and watchdog timer
- Industrial-grade robust and compact fanless design

Learn More 

## ▶▶ Video Wall Signage Player

SI-636



- iSMART 4.0 smart control energy-saving and Observer Connect remote monitoring & management technologies
- Supports 13th/12th Gen Intel® Core™ Processors
- Discrete AMD Radeon™ E8860 graphics processors with 2GB GDDR5 graphics memory
- 2x DDR5-5600 SO-DIMM, dual channel, Max. 64GB
- Flexible video wall display configuration
- 1x M.2 B-Key (3052) for 5G or LTE options
- 1x M.2 E-Key (2230) for Wi-Fi, Bluetooth
- 1x M.2 M-Key (2280) for storage
- 2x RS232 serial ports
- 6x HDMI 1.4 outputs with independent audio
- Slim and segregated flow ventilation design
- Supports OOB function via I210AT LAN port (optional)

Learn More 



## ▶▶ 4K Digital Signage Player SI-344



- AMD Ryzen™ Embedded 8000 series Processors
- Radeon RDNA 3 Graphics and XDNA Neural Processing Unit
- 4x HDMI 2.1 with independent audio output support
- iSMART intelligent energy-saving & Observer remote monitoring technologies
- Built-in CEC and hardware EDID emulation functions with the software setting mode
- 2x DDR5-5600 SO-DIMM, dual channel, Max. 256GB (with ECC)
- 1x M.2 B-Key for 5G or LTE options
- 1x M.2 E-Key for Wi-Fi, Bluetooth or capture card options
- 1x M.2 M-Key for storage
- Supports TPM 2.0 and watchdog timer
- Industrial-grade robust and compact design
- Supports OOB function via I210IT LAN port (optional)
- Supports PDPC (Peripheral Device Power Control) function

Learn More 



## INNOLUX CORPORATION

Innolux was founded in 2003 and went public in Taiwan in 2006. In March 2010, its merger with Chi Mei Optoelectronics and TPO Displays marked the largest merger in the history of the panel industry.

Innolux implements the core business philosophy of "More than Panel", restructuring the business units into two domains, Display and Non-display. Display domain will focus on vertically integrated applications, technological efficiency improvements, and operational synergies. Non-display domain will expand to automotive, medical, Fan-Out Panel-Level Packaging and other fields, and provide customers with comprehensive solutions.

With its innovative and differentiated technologies, Innolux provides advanced display integration solutions, including 8K4K ultra-high resolution, Micro LED, AM miniLED, AM microLED, LTPS and touch solutions. Its product lines also cover various display applications, such as TV panels, desktop monitors and laptop panels, small and medium-sized panels, medical and automotive panels, etc. Innolux formulates specifications, leads the market trend, and provides a full range of product portfolio and solutions to our suppliers and customers in cutting-edge information and consumer electronics manufactures.

Innolux owns 13 TFT-LCD fabs in Jhunan and Tainan, Taiwan, with production lines of all generations from G3.5, G4, G4.5, G5, G6, G7.5, G8.5 to G8.6. It is the world's only one-stop, comprehensive display total solution provider whose products cover large, medium and small sized LCD and touch sensor panel capacities.

Innolux has built the world's largest FOPLP (Fan-Out Panel-Level Packaging) fab in-house, providing customers with a greater set of cost competitiveness and profit value. Through vertically integrated production technologies, we provide a one stop service from Wafer input to Chip testing output, heralding a new era. Additionally, Innolux also offers a full-suite of packaging solutions, including fan-out RDL substrates and Glass Core Substrate (GCS), enabling the next-generation AI chip applications. With these offerings, we drive the core competitive technologies in advanced packaging to a new paradigm.

## Vincent Chang

Email: [VINCENT.S.CHANG@INNOLUX.COM](mailto:VINCENT.S.CHANG@INNOLUX.COM)

Phone: +1-4082064769

## ▶▶ LC Dimming Sun Visor



The Dimming Sun Visor offers a dual-mode functionality: Dimming and Mirror. In dimming mode, it intelligently adjusts its light transmittance in response to ambient sunlight intensity, effectively reducing glare and reflections. This feature ensures refined, natural light and provides 99% UV protection, contributing to a more comfortable and safer driving environment.

[Learn More](#)



## ▶▶ LC Dimming Side Mirror



The Dimming Side Mirror provides significant safety enhancements. It offers instant light adaptation with a seamless transition, meaning drivers are always visible regardless of lighting conditions.

The side mirror actively reduces glare and reflections, crucial for preventing driver distraction. Furthermore, it includes a built-in heating function for defogging, ensuring clear visibility even in adverse weather.

[Learn More](#)

## ▶▶ 37" Stretched Display S370AJ1-LE1



The 32:9 aspect ratio of bar type screen is different from the general 16:9 design and is more suitable for various information push application displays, such as retail, advertising, transportation, instant messaging, etc., or for use in special shapes and irregular space.

## ▶▶ 48.5" Stretched Display S485AJ1-A01



The 48:9 aspect ratio of the bar type screen is different from the general 16:9 design and is more suitable for various information push application displays, such as retail, advertising, transportation, instant messaging, etc., or for use in special shapes and irregular space.

## ▶▶ 65" N3D & Kirameki Set

S485AJ1-A01



- Glasses-Free 3D: Dive into stunning depth and lifelike visuals—no glasses required.
- Kirameki Technology: Capturing the true brilliance and authentic metallic luster of your products.



## **In Win Development Inc.**

InWin is the leading provider of enclosure solutions to system integrators worldwide.

Founded in 1985, InWin is an ISO 9001-certified manufacturer of professional computer and server chassis, power supplies, cooling systems, and system assembly solutions.

### **InWin USA**

Email: [customerservice@in-win.com](mailto:customerservice@in-win.com)

Phone: +1 909 348 0588

## ▶▶ DLITE Flex

IW-DLITE-FLEX



- Modernized minimalism meets superb functionality.
- Designed for high-performance components to build powerhouse PCs
- 8-slot expansion compatible with the latest GPUs
- Optimized airflow with tool-friendly, functional interior
- Elegant wave-mesh front panel for style and airflow

Learn More 

## ▶▶ **COVALENT** IW-COVALENT



- Supports EEB Motherboards for High-End Workstation Builds
- Optimized for AI, and High-Performance Computing
- Equipped with 8-Slot Expansion for Next-Gen GPU
- Flexible Layout with Wide Cooling Compatibility
- Roomy Interior for Versatile Configuration and Airflow

Learn More 



## ▶▶ **MS07** IW-MS07



- Powered by PCIe Gen5 and SAS4, this hybrid workstation delivers enterprise-grade expandability
- Hot-swappable drive bays support NVMe/SAS/SATA interface
- Preinstalled IW-SK-09 series storage kits for easy drive installation and maintenance
- RAID-ready for NAS, AIoT, and data backup applications
- Equipped with high-efficiency 80 PLUS Platinum redundant power supplies
- 80 PLUS Platinum PSU support for CRPS and ATX
- Four PCIe slots accommodate high-end GPUs, optimized for AI workstations
- Up to five cooling fans to ensure superior heat dissipation and optimal system

Learn More 



# IPEVO

## IPEVO Corp.

IPEVO is a leading brand dedicated to the development of professional video communication solutions. Since its establishment in 2007, the company has built a comprehensive portfolio of video communication products. Headquartered in Taiwan, IPEVO operates a subsidiary, IPEVO USA, in Silicon Valley, along with international offices in the United Kingdom, Japan, and the Netherlands, with its products distributed across major global markets. IPEVO's visual teaching and collaboration cameras rank among the world's top 10 document camera brands and have consistently ranked among the best-selling brands in their categories on Amazon US. Widely trusted by educators, IPEVO has established itself as a leading brand and key strategic innovator in the document camera market.

IPEVO has long been committed to transforming the landscape of video communication, providing educators and enterprise users with integrated video and imaging hardware and software solutions that enhance communication efficiency. In 2022, the company expanded into the business application sector, launching a full lineup of video conferencing cameras. In an era where online and in-person meetings coexist, IPEVO leverages advanced technology and intuitive user experience design to turn any space into a meeting environment, making hybrid communication more seamless.

In 2025, IPEVO rebranded under the new identity "AiB," marking a new chapter in its evolution from a video hardware provider to an AI-driven semantic intelligence ecosystem. The company showcases its core technologies and integrated intelligent solutions, extending from education into enterprise-level semantic understanding and knowledge management. This transformation presents a comprehensive vision for the future of semantic intelligence platforms. IPEVO remains committed to a design-driven and human-centric philosophy, focusing on innovation in video and voice communication technologies, and continues to be a market leader and key strategic innovator.

## Kate Liu

Email: [kateliu@ipevo.com](mailto:kateliu@ipevo.com)

Phone: +886-2-5550-8686

## ▶▶ **Vurbo.ai** IW-DLITE-FLEX



# Vurbo.ai

Vurbo.ai is an advanced AI-powered communication assistant designed to break down language barriers and streamline spoken and written interactions across personal, professional, and educational settings. It combines real-time speech-to-text transcription, instant multilingual translation, automatic summarization, and AI chat features to help users capture, understand, and manage conversations more effectively.

A standout capability is its cloud translation system, which enables real-time, browser-based translation and subtitle delivery without requiring participants to install an app. Event hosts can generate a session code or QR code that attendees scan to access live translated subtitles and audio in their preferred language on their own devices. This cloud feature supports 100+ languages, up to eight simultaneous translations, and scales to large audiences (e.g., conferences or webinars) while keeping setup simple and flexible. It captures both microphone and system audio for accurate transcripts and translated text, and can recognize domain-specific terminology to improve accuracy in technical or specialized discussions.

Vurbo.ai works across devices (Windows, macOS, iOS, Android) and offers flexible usage plans ranging from basic free minutes to unlimited professional licenses, making it suitable for individuals, global teams, educators, and large-scale events. Security and privacy are built in, with local data storage and strong encryption ensuring user content remains protected.

[Learn More](#)



## ▶▶ IPEVO TOTEM 360

CDCU-011P



Experience a comprehensive audio-visual solution with IPEVO TOTEM 360. This all-in-one system seamlessly stitches together a 360° image from four cameras, revolutionizing your team meetings, lectures, and presentations. Engage online participants with immersive video modes that transport them into the meeting room or lecture hall, fostering a sense of physical presence. With TOTEM's portability and effortless setup, you can easily convert any room into a hybrid conferencing space.

[Learn More](#)



## ▶ VOCAL TRANSCRIBER Capture 8 Distinct Voices and Insights with 8 Wireless Mics

SI-212-N

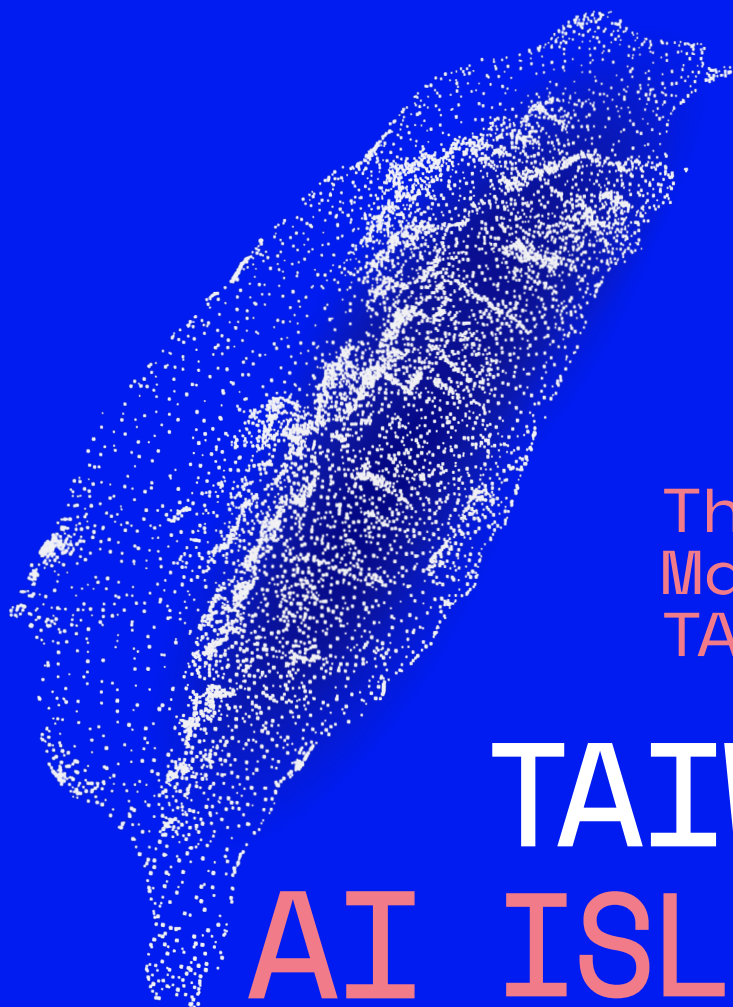


The VOCAL TRANSCRIBER, powered by Vurbo.ai and innovative hardware–software co-design, achieves what software alone cannot. Each participant wears a uniquely numbered wireless microphone, enabling Vurbo.ai to map every word to the correct speaker with exceptional accuracy. This unified platform supports up to eight wearable microphones through an integrated base, ensuring reliable voice capture and real-time transcription – even during overlaps, crosstalk, or interruptions.

[Learn More](#)



**TAIWAN  
EXCELLENCE**



The Best  
Made in  
**TAIWAN**

**TAIWAN**  
**AI ISLAND**