



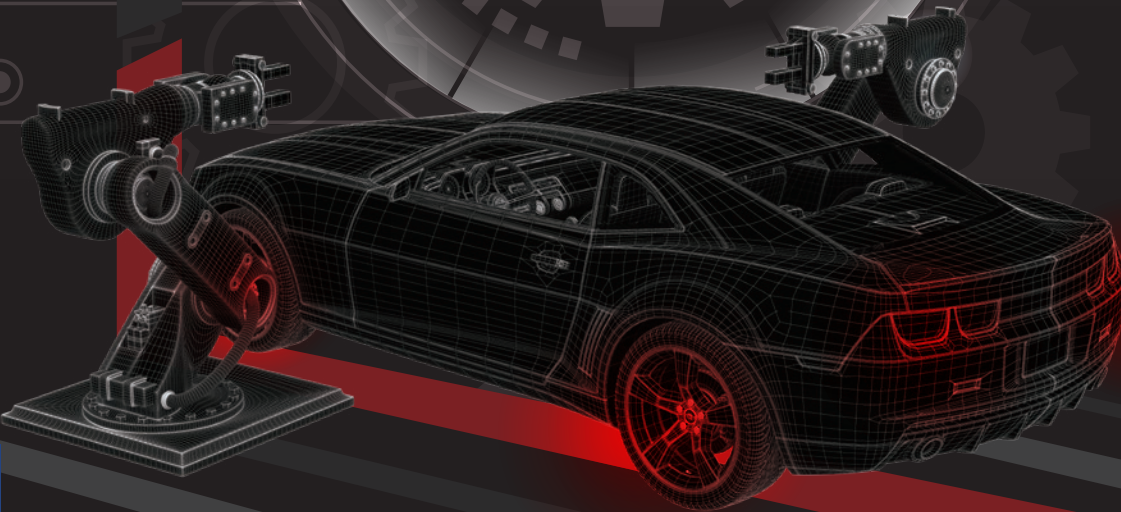
**TAIWAN
EXCELLENCE**

AAPEX Automotive Aftermarket
Products Expo

Las Vegas, Sands Expo

Taiwan Excellence Pavilion

Booth. 8034 | Nov. 05-07, 2019





CONTENT

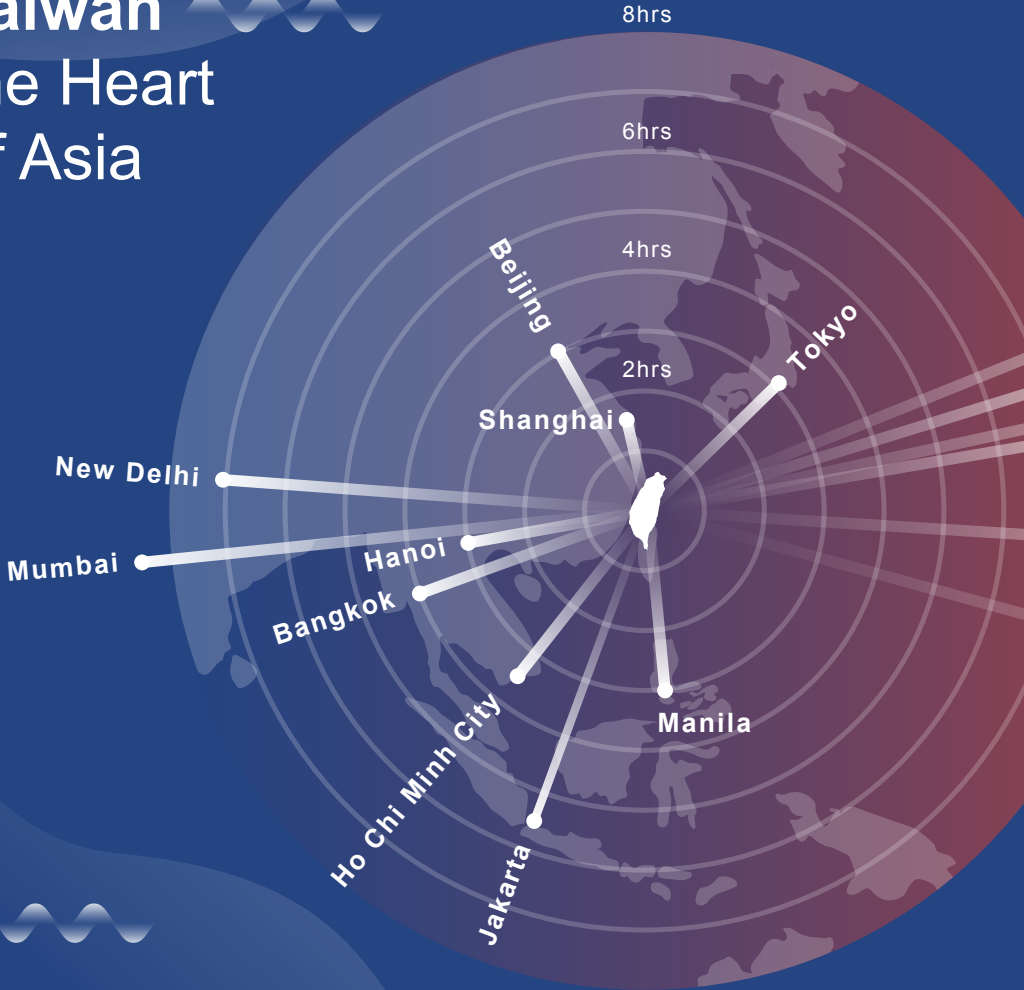
p. 01 ABOUT
TAIWAN

p. 12 ABOUT
US

p. 15 PRODUCTS

Taiwan

the Heart of Asia



- Asia
- Europe
- America

About Taiwan

■ Landmark

Taipei 101
(The 10th tallest building in the world)



■ Climate

Tropics
Subtropics

■ Area

36,197 km²
(Ranked 139th)



✈️ 12hrs

✈️ 16hrs

✈️ 24hrs

Berlin

Istanbul

Los Angeles

Madrid
New York
Chicago

Mexico City

Rio de Janeiro

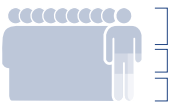
✈️ 12hrs

✈️ 16hrs

✈️ 24hrs

■ Ethnicity

■ Population



95.5%	Han Taiwanese/ Hakka/ Hoklo
2.3%	Indigenous People
2.2%	New Immigrant

23.58 million
(Ranked 56th)



Taipei
Taoyuan
Hsinchu

Taichung

Tainan
Kaohsiung



Asia
Silicon Valley



Smart
Machinery



Green
Energy



Biotech &
Pharmaceutical



National
Defence



Smart
Home



Smart
Energy



Smart
Retail

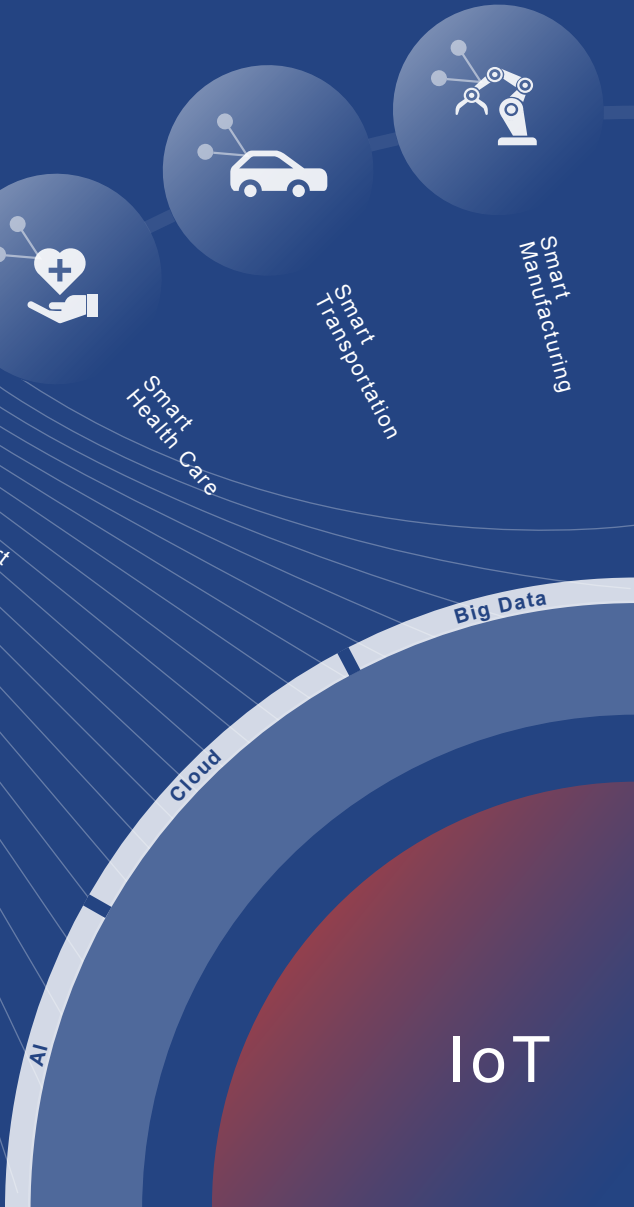


Smart
Security

5 Major Innovative Industries Policy

Application of Industrial Internet of Things

Applications of Innovative Industries Policy & IoT System



Taiwan's advantage in Intelligent System

Taiwan has the advantage in developing AI/smart system with supporting policies, intellectual and complete industrial cluster. With the government supporting, Asia Silicon Valley Development Plan as an integrated platform is intended to guide the transformation of Taiwan innovative economy. The plan establishes an IoT Industry Major League team, led by manufacturers such as Acer, Advantech and Mediatek with over 400 businesses and startup companies forming an industry ecosystem.



NCTU-Cradle of Tech talents



Hsinchu Science and Industrial Park- ICT Cluster



ASVDA- A government supported integrated platform



Taiwan's first self-driving bus by ASVDA

IoT

Taiwan Economy

Primary Export Destinations

(unit : US \$)

Total
Import
Value

Total
Export
Value

287 billion

336 billion

Ranked 18th

Ranked 19th

European
Union

8.8%

Others
9.2%

Economic Statistics

(unit : US \$)

Source: Ministry of Finance,
WTO, IMF, National Statistics

■ GDP Growth Rate



2.66%
(2018)

■ PPP



51,865
(Ranked 20th)

■ GDP



588 billion
(Ranked 23rd)

■ GDP/ Capita



24,889
(Ranked 19th)

■ Innovation Capability

4th

Taiwan is ranked 4th in "Innovation Capability" in The World Economic Forum's "Global Competitiveness Report 2018".

■ Doing Business

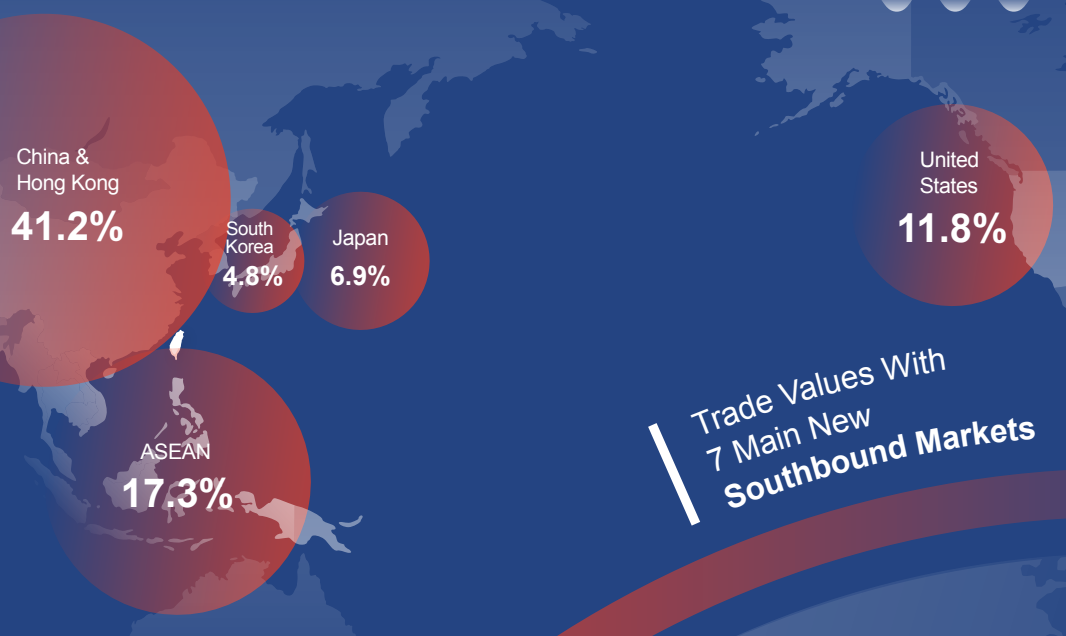
13th

Taiwan is ranked 13th in the "Doing Business 2019" survey by the World Bank.

■ World Competitiveness

17th 4th

Taiwan is ranked 17th in the 2018 Annual World Competitiveness Yearbook and 4th in the Asia-Pacific region.



(unit : billion US \$)

■ Trade Growth Rate
6.1 %

↑
72.8 (in 2018)
68.7 (in 2017)

(unit : billion US \$)



Industrial Clusters



● Textile

Taiwan is the main base for R&D and production of textile. Now, Smart Textile is one of the trends.

● Healthcare

Taiwanese enterprises have a long collaboration with multinationals. It makes Taiwan become an upstream medical devices and a key link in the chain.

● ICT

These clusters make Taiwan the “go-to” for procurement and design.

● Sports & Leisure

The export amount of sporting goods reached US\$ 1.9 billion in 2018.

● Bicycles

The A-Team (a team comprised of 20 bicycle companies) has created innovative new products of high quality.

● Machine Tool

Taiwan is one of the top exporting countries of machine tools.

● Orchid

Perfect growing environment, advanced breeding method and patent protection enhance the competitiveness of the orchid industry.

● Super Yachts

The success of Taiwan's yachts rests on three main points: high building skills, superior craftsmanship and customized solutions.

● Automobile Electronic

The auto electronics industry of Taiwan is founded on the strengths of its well-developed ICT and auto parts industries. In 2018, the auto electronics industry reached an output value of US\$6.6 billion.

● Biomedicine

Innovative medical devices and new marketing models driving and forming a complete production and service ecosystem.

● Automobile Parts & Accessories

The auto parts industry has the capability of providing original equipment (OE) and after market (AM) service to global supply chain.

● Green Energy

The Photovoltaic industrial cluster development encompasses the complete supply chain. Production accounts for 30% of all fasteners internationally and is exported to over 140 countries.

● Fastener

Industries In Taiwan



roduction of functional
developing priorities.

porative relationship
ome a producer of
in the global supply

to" location for

ector reached

e and parts
products with

for

tive-



1st 70%

Functional Textiles hold a 70% market share worldwide.



1st

The world's 1st. mid-range and high-end mobility scooters exporting country.



1st 68%

Taiwan's IC Foundries hold the largest market share in the world.



1st 80%

80% of world's golf club heads are produced by Taiwanese companies.



1st

Holds the largest import share in Germany, the Netherlands and UK.



7th

5th

The world's 5th machine tool exporting country. The 7th machine tool maker in the world.



US\$ 173 million

The export amount of the Taiwan orchid reached US\$ 173 million.



4th

1st

The 4th builder country in the world and Asia's biggest maker.

Industries Taiwan leads the world in

Intellectual Advantage

Education Level

44.5%

University or Above

30.6%

Senior High School

12.8%

Junior High School

12.1%

Primary School

University Ranking



Top 500 X 11

A total of 11 Taiwanese universities have made the world's list for the top 500 universities

Culture of Taiwan

Attractions In Taiwan

- International Airport
- High Speed Rail Station



New Taipei City-Jiufen



Taichung City-Dajia
Jenn Lann Temple



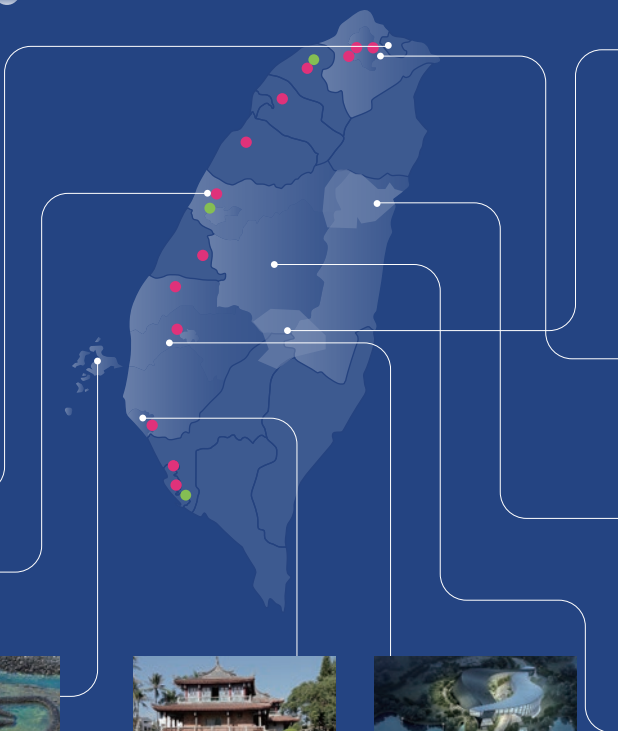
Penghu County-Cimei
Twin Hearts Stone Weir



Tainan City-
Chihkan Tower



Chiayi County-National
Palace Museum



JAN

**New Year's
Day**



FEB

Taiwan Lantern Festival
The sky lanterns of the festival carry the prayers and vows of the people.



MAR

**Taichung City Mazu
International Festival**
•
**The Tung
Blossom Festival**



APR

Festivals In Taiwan





Yushan National Park

Mt. Jade is the highest peak in East Asia (3952m)



Taipei City-National Palace Museum



Hualien County-Taroko National Park



Nantou County-Sun Moon Lake



Tastes of Taiwan

Taiwan's street cuisine is beloved by food enthusiasts around the world. One of the quickest ways to experience is to visit night markets.



Bubble Tea



Xiaolongbao (Steam Dumpling)



Shaved Ice Dessert



Braised Pork Rice



Pineapple Cakes



Zongzi (Rice Tamales)



Ba wan (Giant meat dumplings)



Oyster Omelet*



SEP



DEC

MAY

JUN

JUL

AUG

OCT

NOV

Dragon Boat Festival

It is one of Taiwan's three major annual traditional holidays. Dragon boat races are held, and people eat Zongzi (Rice Tamales) on Festival day.

Mid-Autumn Festival

On the Festival day, family members get together, see the full moon and eat moon cakes with pomelos.

Winter Solstice Festival

*Source: flickr, bryan..., <https://is.gd/jppUNg>



**TAIWAN
EXCELLENCE**

Taiwan Excellence Pavilion

Taiwan Excellence Pavilion showcases the country's best innovations across industries. Located on 3F of Nangang Exhibition Center, the Pavilion is home to Taiwan Excellence Award winning products. Visiting Taiwan Excellence Pavilion is a visual feast for eyes and a physical experience for hands, combining technology with aesthetic design.

www.taiwanexcellence.org/en

www.taiwanexcellence.org/tw/pavilion



Taipei
Nangang
Exhibition
Center

Taiwan
Excellence
Pavilion
3F

MRT **BL23** **BR24**
Nangang Exhibition
Center Station

3F, Hall 1, Taipei Nangang Exhibition Center
No. 1, Jingmao 2nd Rd.,
Nangang District, Taipei City

Take Taipei MRT **Blue Line** or **Brown Line** to Taipei
Nangang Exhibition Center Station

Free Admission

Mon - Fri 10:00-18:00 &
Exhibition Days

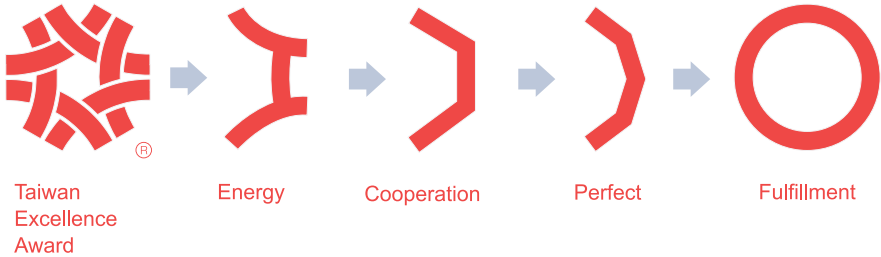


Taiwan Excellence

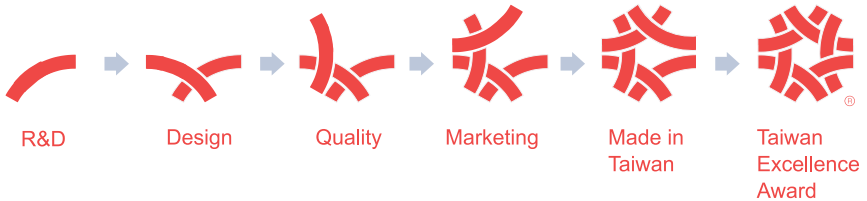


Taiwan Excellence Pavilion

Brand Connotation



Items of Selection



Taiwan Excellence shows the competitive “Innovative Value” of Taiwanese product. Initiated by Ministry of Economic Affairs (MOEA), R.O.C. (Taiwan) in 1993 and implemented by Taiwan External Trade Development Council (TAITRA). The symbol of Taiwan Excellence honors Taiwan's most innovative products that generate tremendous value to worldwide users and it is recognized in 102 countries.

The symbol endures 4 brand connotation. The first icon "Energy" represents the vigor that distinguishes Taiwan's local industries. The second icon "Cooperation" represents the bonds of solidarity that unite Taiwan's manufacturers. The third icon "Perfect" represents Taiwan's manufacturers pursuit of

perfection and excellence. The fourth icon "Fulfillment" owes its origins to the traditional Taiwanese cultural affinity for "completeness" or "wholeness".

The Taiwan Excellence Awards selection has been implemented to select annually the most innovative products based on their excellence in criteria including R&D, Design, Quality, and International marketing. Taiwan Excellence Awards are given to products that stand out the selection and show competitive “Innovative Values”. All award winning products are entitled to apply the Taiwan Excellence mark for marketing and promotional purpose. Award-winning companies are proud to embrace the mark as the highest honor of Taiwan national recognized and endorsed excellent products.



The symbol of Taiwan Excellence honors Taiwan's most innovative products that provide tremendous value to users worldwide. All products carrying this symbol have been selected for specific Taiwan Excellence Awards based on their excellence in design, quality, marketing, Taiwanese R&D and manufacturing. Initiated by the Ministry of Economic Affairs (MOEA), R.O.C. in 1992, the symbol of Taiwan Excellence is recognized by 102 countries.



Bureau of Foreign Trade (BOFT), MOEA

The Bureau of Foreign Trade (BOFT) under The Ministry of Economic Affairs (MOEA), R.O.C. is responsible for implementing policies and regulations governing foreign trade and economic cooperation. Established in January 1969, BOFT's role and position have been adjusted regularly to meet the needs of the ever changing international economic and trade environments. The BOFT has been guiding and working with the Taiwan External Trade Development Council (TAITRA) in numerous trade promotion projects and activities both internationally and domestically. Having worked closely with TAITRA for many decades, BOFT continues to commission TAITRA for various critical government projects relating to business, trade and investments, while promoting Taiwan international-



Taiwan External Trade Development Council (TAITRA)

Founded in 1970 to help promote foreign trade, the Taiwan External Trade Development Council (TAITRA) is the foremost non-profit, semi-governmental trade promotion organization in Taiwan. Jointly sponsored by the government, industry associations, and several commercial organizations, TAITRA assists Taiwan businesses and manufacturers with reinforcing their international competitiveness and in coping with the challenges they face in foreign markets. TAITRA boasts a well-coordinated trade promotion and information network of over 1,300 international marketing specialists stationed throughout its Taipei headquarters and 68 branch offices worldwide. Together with its sister organizations, Taiwan Trade Center (TTC) and Taipei World Trade Center (TWTC), TAITRA has created a wealth of trade opportunities through effective promotion strategies.



PRODUCTS



Auto Parts



ADDA CORPORATION 29



BAN HON INTERNATIONAL CO., LTD. 23



COMEUP INDUSTRIES INC. 24



CUB Elecparts INC. 25



Eagle Eyes Traffic Industrial Co., Ltd. 26



KAI SUH SUH ENTERPRISE CO., LTD. **27**



KENDA RUBBER IND. CO., LTD. **30**



TYC Brother Industrial Co., Ltd. **31**



UNI AUTO PARTS MANUFACTURE
CO., LTD. **32**

Mobile Electronics & Telematics



Embrace Audio Lab

33



EverFocus Electronics Corp.

34



FUHO TECHNOLOGY CO.,LTD.

35



Noodoe Corporation

36



Transcend Information Inc

37



UniMax

UniMax Electronics Inc.

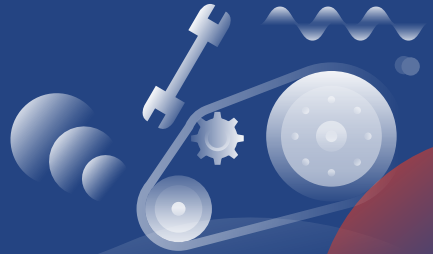
38



WiseChip Semiconductor Inc.

39

Manufacturing & Tools



AIRBOSS AIR TOOLS CO., LTD.

40



CoreTech System Co., Ltd.

32



Techman Robot Inc.

39



BAN HON INTERNATIONAL
CO., LTD.

FK ELITE

ELITE 5W-30 / ELITE 5W-40
ELITE 10W-40 / ELITE 15W-40

FK ELITE Series embodies “Technology in Mobility” via outstanding, substantiated performance relevant to the urban and environmental drivers contributing to today’ s increasingly dynamic automotive landscape.

Driven by ever tightening emissions and fuel efficiency regulations, turbocharged engines are widely adopted by automotive manufacturers and emerging onto the mainstream. ELITE 5W-30 offers leading deposit protection specifically tailored for the extreme operating conditions of turbochargers.



FK EURO

EURO PLUS 5W-30 / EURO 5W-30
EURO 0W-40 / EURO 5W-40

FK's EURO Series has been developed to meet and exceed the unique technical requirements mandated by each manufacturer.

This consolidated approach provides consumers with unparalleled performance. With just 4 product offerings within the series, EURO is able to efficiently fulfill over 90% of the oil specifications required to service the European car market.

The technicality of oil selection can be an intimidating process for consumers. FK has built a vast vehicle database for its Oil Selector Tool; helping users confidently match the correct product to their unique vehicle.



Utility Duty Winch

UW-5000si

- Compact design allows a wide range of application on trailers and boats
- High torque permanent magnet motor enables high line pull at lower amp and slip free dynamic brake
- 3-stage planetary gearbox delivers the most reliable and durable performance of winch under the most rugged conditions
- Sliding pin and ring gear clutch for rapid rope payout
- Automatic load-holding mechanical brake plus motor dynamic brake ensure holding the load without slippage
- Circuit breakers prevent motor from overheating



www.comeupwinch.com

Automotive Winch

Seal Gen2 9.5rsi

- New Intelligence Dashboard (IDB): Patented Power Cutout Switch
- Cutout switch prevents the vehicle battery from draining when not in use
- 12V DC severe duty winch rated at 9,500lb pulling meets or exceeds your expectations
- 16 equally positioned pin holes with a stainless steel ergonomic T-handle make it possible to reposition in 22.5 degree increments
- Both built-in digital signal two way wireless remote control and wired water-proof remote control
- The patented mechanical cone brake outside the drum expedites heat dispersion and also makes the winch ideal for use with synthetic rope



www.comeupwinch.com



CUB Elecparts INC.

Turn Assist System

VS-95A040

With VS-95A040 installed on each side of any commercial vehicle, it not only detects obstacles from far away, but also offering precise detection over obstacles within blind spots at close range while making turns.

Taillamp Blind Spot Detection System

F150 VS-95A004

Cub Elecpart F150 VS-95A004 is specifically designed to integrate the radar within pickup truck taillights solving the radar signal interfering issue with metal bumper on most pickup trucks.





EAGLE EYES

Eagle Eyes Traffic Industrial
Co., Ltd.

EAGLE EYES High Performance 7" Full Led Universal Taillight

SR055

- Subaru LeVorg
- High safety
- LED illumination
- Streamlined LED light bar
- Sequential turn signal
- High visibility
- Low accident rate

EAGLE EYES High Performance 7" Full Led Universal Headlight

CS336-4V

- 7"LED headlights
- Jeep Wrangler
- Low energy consumption
- Ultra bright
- High penetration
- Universal



**TAIWAN
EXCELLENCE**



**TAIWAN
EXCELLENCE**





KAI SUH SUH ENTERPRISE
CO., LTD.

Nylon Cable Tie

CV series/EP510

- Good tensile strength and tough-built from aging
- Effectively manage wires, cables, gardening and packaging to make the works neat and tidy

Easy Releasable Cable Tie

HB200BK/

PHB-200BK-10

- KSS develops patent easy-press lever by combining power and art from outward ergonomics, Easy Releasable Cable Tie is strong and easier to use
- UL approved material complies with RoHS and FDA
- Features:
 - Releasable, environmental friendly
 - Ergonomic, easy-press lever makes release easier
 - Smooth surface prevents damage
 - Released by one hand, body slide out automatically



 www.kss.com.tw



 www.kss.com.tw



KAI SUH SUH ENTERPRISE
CO., LTD.

Hook Tie

DP-2-A/A Series

For kitchen, bathroom, bedroom, or even baby stroller. The design is convenient for bundling and hanging stuff.

- Patented
- Dual-direction hook tie
360 degree rotatable hook fits all directions
- Releasable, reusable and environment-friendly
- Holds up to 1.5Kgf by SGS standard

Nylon Cable Tie

CV series/BP650

- Good tensile strength and tough-built from aging
- Effectively manage wires, cables, gardening and packaging to make the works neat and tidy





ADDA CORPORATION



KENDA RUBBER IND. CO., LTD.

ES Vehicle Cooling Fan

AG04014XB205000

ADDA ES vehicle cooling fan performs in response to the headlight market in automotive industry and to create greater antipyretic effect with very limited space.

KLEVER S/T

KR52

The Klever S/T KR52, mainly sold in the North American market, is designed to provide a long tread life, maximize ride comfort and a balanced tire performance for snow and wet weather for a wide range of CUVs and SUVs.



KLEVER H/T2

KR600

Klever H/T2 provides a great ride with strong wet/snow performance for the LT segment. Advanced modeling and compounding guarantee Klever H/T2 the durability for up to 50,000 miles on LTR sizes and 60,000 miles on P-metric.

Computer optimized footprint for excellent wear and handling under multiple load conditions. Strong shoulder blocks enhance handling and cornering stability. Snow sipes and increased lateral groove densities improve traction performance and driving stability in wet/snow conditions. Wide circumferential groove widths improve hydroplaning & wet traction.



Ve zda UHP A/S

KR400

Kenda Ve zda UHP A/S high performance all season tires deliver value-priced quality-performance tire for your sports car, sedan, or coupe to hit the road.

Formulated with a special silica compound that combines summer levels of wet and dry performance with strong cold weather and light snow capabilities, these performance tires will keep you road savvy all year long.





TYC Brother Industrial Co., Ltd.

Full LED Motorcycle Headlamp for Ducati Italy

90-5303

This Motorcycle Head Lamp is designed and produced by TYC for Ducati New XDiavel S model that won the 2016 Red Dot Design (Best of the Best Award).

Comparing to Halogen bulb, it saves 70% of the energy. In addition, light weight and recyclable materials such as PC, PP, aluminum alloy, as well as non-toxic material are being used to conform the environmental-friendly and energy-saving demand. Both high and low end design versions are available to meet various market segment requirements.

High Performance HI-LOW LED Headlamp

20-9993

The Hi-Low beam function LED head lamp is designed and produced by TYC with high performance and energy-saving Hi-Low optical modules. It is entirely complying with environmental-friendly trend. Using one high power light intensity LED to meet SAE regulation for low beam function.

Compared to traditional halogen bulb, it upgraded the life span with the light source providing comfort and security driving along the way.





UNI AUTO PARTS MANUFACTURE
CO., LTD.

Moldex3D

CoreTech System Co., Ltd.

UNI AUTO Luxury Car Seat

Ottoman luxury car seat UNI 1001

UNI 1001 luxury seat is designed for SUV, bus, coach, MPV and for household luxury sofa uses. UNI 1001 luxury seat have 8-way power functions with airbag massage, lumbar support, and memory feature for up to 2 users.



www.uniautoparts.com

Moldex3D

R17

Moldex3D R17 is the next-gen molding simulation solutions designed to pave the way for smart design and manufacturing with realistic simulations, critical insights. Moldex3D R17 provides more comprehensive and realistic simulations to help users close the gap between the physical and virtual worlds.

The new user interface and the unified simulation workflow allow users to gain deeper insights into product performance faster, accelerating the decision-making process. In addition, to tackle the ever-growing demand for lightweight components in the automotive and aerospace sectors.



www.moldex3d.com



Embrace Audio Lab

XPUMP 3D Audio Processor

XP-02

XPUMP, its core technology is XROUND audio algorithm. XPUMP takes ordinary stereo speakers or earphones to the next level with surround sound effect and boosted details giving the users immersive enjoyment.

VERSA TWS Earphones

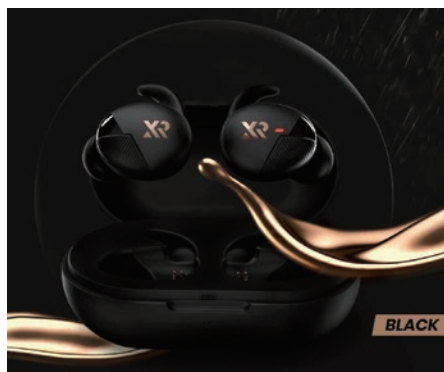
TWS05C-D01

VERSA TWS is a new-generation product line of XROUND. In combination with the latest wireless bluetooth trend of TWS, it is oriented to consumer demand. In addition to meeting the functional requirements, it can also use specially designed sense of wearing on top of earplug design.

XROUND tuning engine APP will take the earphones to the next notch with limitless experiences.



us.xround.co



us.xround.co

In-Vehicle Rugged PC

eIVP5600

- Rugged vehicle industrial PC
- Equipped with 2 hot swappable SDD trays
- Wide Operation temperature range
- Industrial anti-vibration design
- Intel Movidius AI (optional)

NVIDIA Embedded AI Computing Platform

eIVP1570E

Based on Nvidia Pascal structure, Jetson NANO is a micro computer with superior computing power. Perfect for AI applications as edge computing devices.



20 Device CarBox Server Private Cloud

GK350A

- Multiplex and maximize hard drive performance
- Support SATA / SATA II hard drive up to 8TB
- Easy installation
- All private video & audio data under secret transmission without going through other cloud & server
- Easy & friendly operation
- Cost-effective fleet management for small to mid-size companies use



Smart Cloud Driving Recorder Dashcam (Vehicle)

VG07

- Front lens: 1080P CMOS Sensor, front view angle approx. 120 ° ; Back lens: 720P CMOS Sensor, rear view angle approx. 130°
- Built-in supercapacitor offers extensional power supply to ensure critical moment is well stored and compact
- Recording driving condition, sound, G-Sensor and GPS data
- Recording track of driving routes to be shown on Google map at video playback
- G-sensor sensitivity can be adjusted according to road conditions. When detecting a strong impact, system will start emergency recording and keep the files without being overwritten
- No built-in lithium battery risking over heat and bursting concerns, a real black box



Noodoe EV

S1000

Noodoe EV S1000 Single Pedestal, at Level 2 Commercial Charging 32 Amps. Powered by Noodoe EV OS, Noodoe EV has a competitive advantage against other EV charging stations, because of its distinct features such as using QR code scanner for multi-payment methods with credit card, Apple Pay, Google Pay and other alternative payment methods (charging codes and RFID cards).

Other benefits include; map placement, self-generated revenue, price management of peak and off-peak hours, web console for analyzing charging data and revenue data.



Noodoe EV

P1100

Noodoe EV Portable (P1100) Level 1 & 2 portable charger allows plug and play with all regular wall outlets or NEMA 6-20P.



Dashcam

DrivePro™ 550

Transcend's DrivePro 550 is a dual lens dash camera that provides both drivers and passengers with optimum protection.

The front lens features a Sony image sensor and wide field of view for capturing crystal-clear Full HD 1080P (30fps) videos, while the 180° rotatable rear lens is equipped with four Infrared LEDs, allowing sharp in-car video recordings at night and in low light conditions.

Dashcam

DrivePro™ 230

Transcend's DrivePro 230 dashcam was designed with both style and safety in mind. The DrivePro 230 features a Sony image sensor to capture high-resolution videos with extremely fine tonal gradation even in low light.

In addition, it features a GPS/GLONASS receiver, a built-in battery, a handy snapshot button, and Wi-Fi connectivity.

More than just a safety device, Transcend's DrivePro 230 is a fellow traveler ready to explore more of the world with you.



Wireless Charging Pad

- Qi WPC v1.2 Standard, Compatible with Qi standard device (Phone > Pad....)
- FOD(Foreign Object Detection)
- WPC Qi certified capability
- Fixed frequency for Keyless interference prevention
- Charging efficiency up to 70%
- LED indications
- Can be installed through Toyota Genuine Accessory and Nissan Design Specification to selected car models
- Customizable
- NFC Connection & Recognition
- Supports iPhone 7.5W and Samsung 9W



Combiner Type HUD

- The front virtual image distance reaches up to 2 meters
- Operating temperature ranges from -30 to +85°C
- Display brightness exceeds 30,000 nits
- Turn by turn navigation (HUD connects to smart phone by Bluetooth)
- Car Information(HUD connecting to OBD2 dongle by Bluetooth)
 - Hands-free call and Gesture control





WiseChip Semiconductor Inc.



Techman Robot Inc.

Transparent OLED For Head-Up Display

TOLED Series

Product Description:

Transparent PMOLED Display Panels for Head Up Display (HUD) for automobiles:

- High Transparency
- High Contrast Ratio
- Viewing Angle: 360°
- Fast Response Time ($\leq 10\text{ms}$)
- Thinner & Lighter & Durable
- Wide Operation Temperature (-40°C~105°C)

Specifications:

- Color: 4 colors (Red/Orange/Green/White)
- Display type: Segment Type
- Icons: 230 Predefined
- Luminance(cd/m^2): 1000 cd/m^2
- Operating voltage: 15V



TM Robot + TMmanager

TM5-900

TM5, the world's first collaborative robot featuring built-in visual recognition from perfectly integrated hands, eyes and brains into one system improving the easiness of using industrial robots and remarkably reduce the cost and deployment time.

Smart: With our powerful built-in vision system, TM5 can see, think and work unitedly and smartly like human.

Simple: Users can use hand-guiding function to teach robot every pose and point in the task. All-graphic flow chart based HMI allows people to use robots as simple as smart phones.

Safe: TM5 complies with the ISO 10218 human-robot safety requirement.



Pneumatic Tool

AW-80T

- New ultra short with patent certificate
- Compact: 20%~30% less than other similar function air tools but only 95mm in length
- Twin hammer
- 1.19kg light weight. Suitable for auto repairing shops

Pneumatic Tool

AB-190PL

- Economic professional air wrench with twin hammer mechanism that is easy to operate
- Applicable to assemble and repair vehicle and machinery
- Tough built and easy to repair
- Quality on top of affordable price





**TAIWAN
EXCELLENCE**

Organized by



Bureau of Foreign Trade, MOEA



Taiwan External Trade Development Council



Facebook



Taiwan Excellence

Taiwan Trade Center, Los Angeles

3660 Wilshire Blvd. Suite 528, Los Angeles, CA 90010 U.S.A.

Tel: +1-213-9081801